



**AT5000 HFC
Headend
Solution NMS**

**Quick Reference
Guide**

Revision B

ACT AT5000 Headend Solution NMS

Quick Reference Guide

ACT Document Number: ACT AT5000 Headend Solution NMS QRG

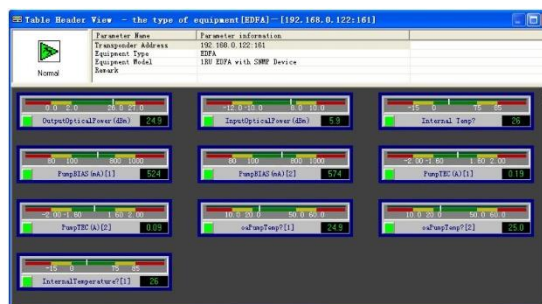
Quick Reference Guide Revision B

Copyright © 2026 Ascent Communication Technology Limited.

All rights reserved. Reproduction in any manner whatsoever without the express written permission of Ascent Communication Technology is strictly forbidden.

This document is produced to assist professional and properly trained personnel with installation and maintenance issues for the product. The capabilities, system requirements and/or compatibility with third-party products described herein are subject to change without notice.

For more information, contact ACT: support@ascentcomtec.com



Revision History

Revision	Date	Reason for Change
A	09/28/2025	Initial release
B	04/01/2026	Update format

Contents


1 Introduction	4
2 Installation.....	4
2.1 Software Installation.....	4
2.2 Registration.....	4
2.3 Initial Setup.....	4
3 Operation	4
3.1 IP detector	4
3.2 Modify Device IP.....	5
3.3 SNMP Configuration	5
3.4 Add/Delete Equipment.....	6
3.5 View Status	8
3.6 Alarm Management.....	8
3.7 Advanced Functions	11
3.8 Notes	13

1 Introduction

The ACT AT5000 Headend NMS (Network Management System) is designed to monitor, configure, and manage HFC headend equipment efficiently. It provides real-time visibility into device status, alarm conditions, and performance parameters.

2 Installation



2.1 Software Installation


1. Extract the compressed package. 
2. Copy the software to:C:\Program Files.
3. Ensure files are properly installed

2.2 Registration

1. Open C:\Program Files\Manager3 file.
2. Launch application.
3. Click RegOBJ.exe  Class Registry CATV Tech, choose "Begin".

2.3 Initial Setup

1. Open C:\Program Files\ Manager, Create shortcuts of  and .


2. Click  to configure system settings.

3. Click  to change the IP.

3 Operation

3.1 IP detector

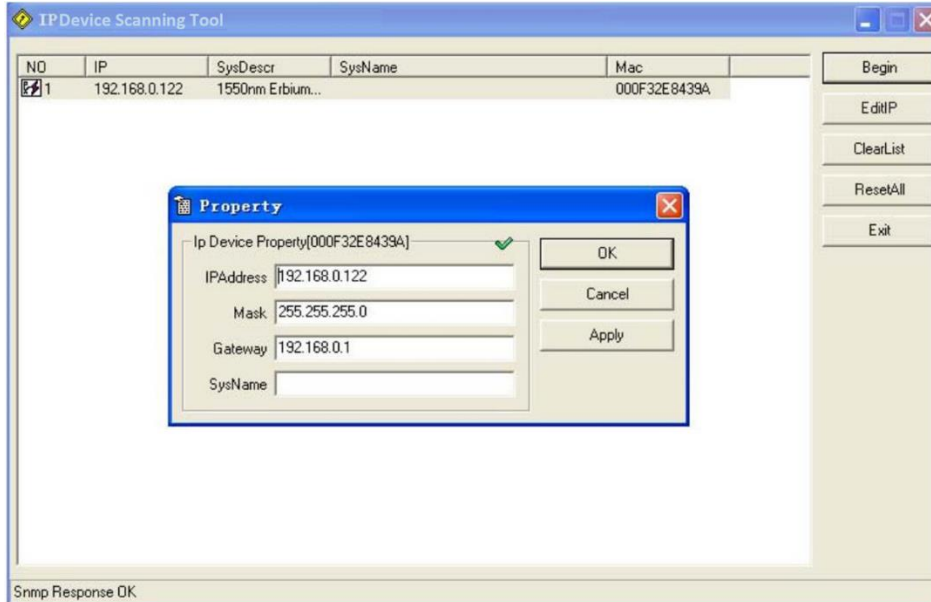
1. Modify the NMS computer's Internet Protocol (TCP/IP) properties to ensure that the computer's IP address resides within the same network segment as the AT5000 devices. For example: 192.168.0.X.

2. Set Up , Click "Begin" to scan the detailed information of the machine.

3. View device info including No of equipments connected, IP, Model Number, MAC address.

3.2 Modify Device IP

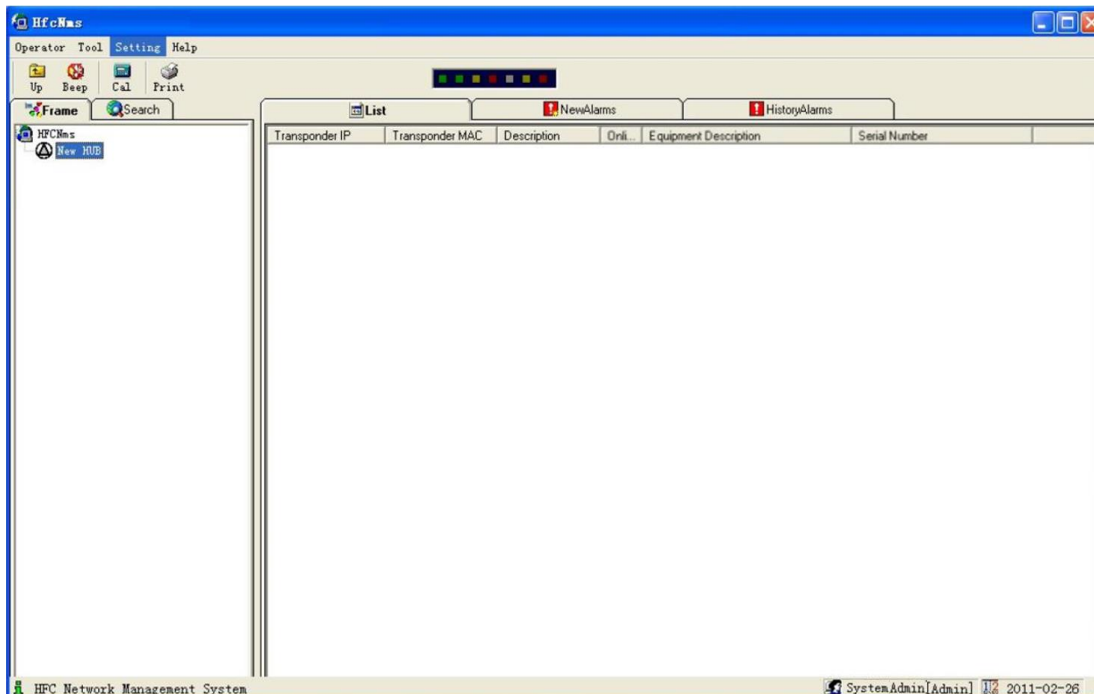
1. Select device.
2. Click "Edit IP".
3. Enter the interface and change the IP information including IP Address, Mask, Gateway.



3.3 SNMP Configuration

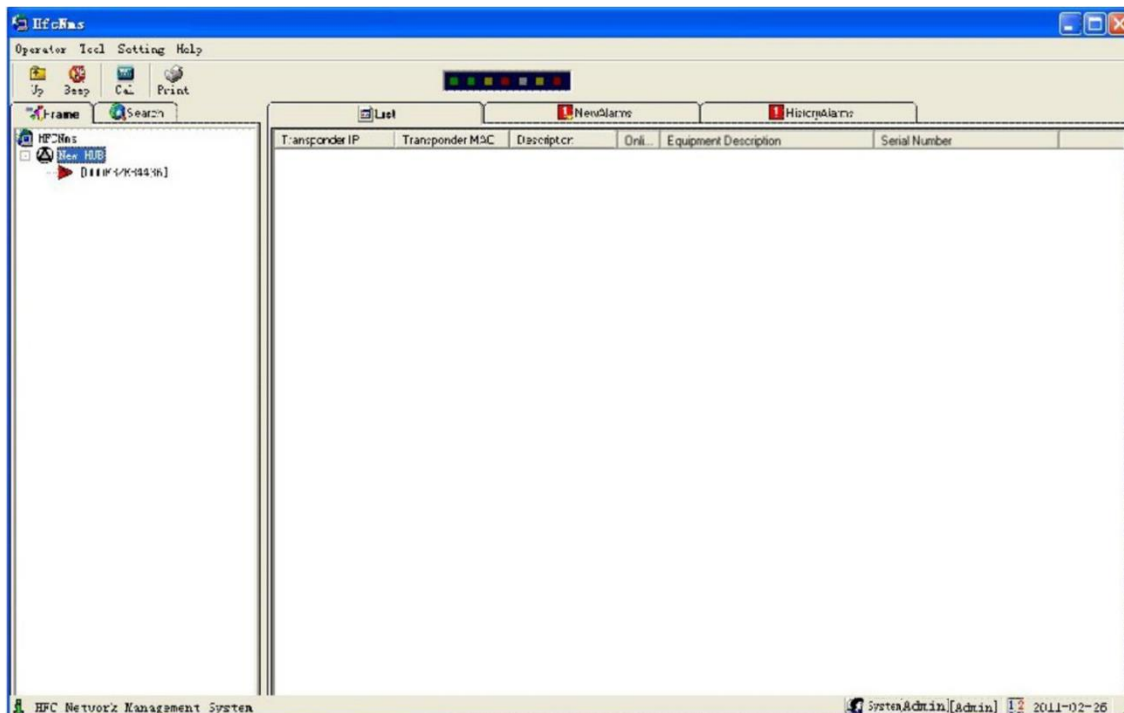
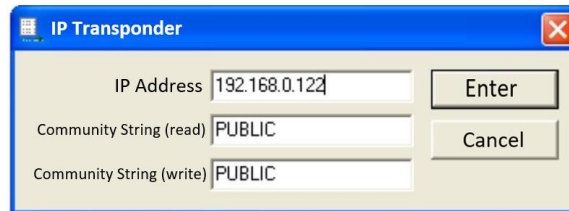
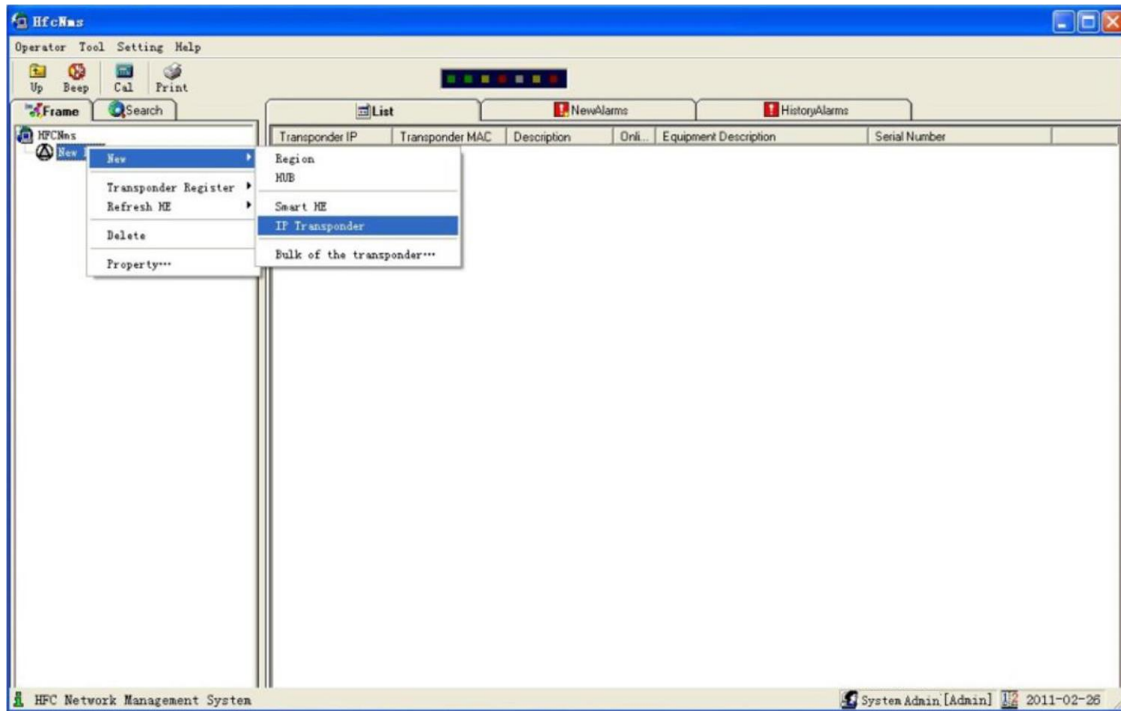


1. Click **Manager3**, Username: admin, Password: blank.
2. Enter the SNMP.

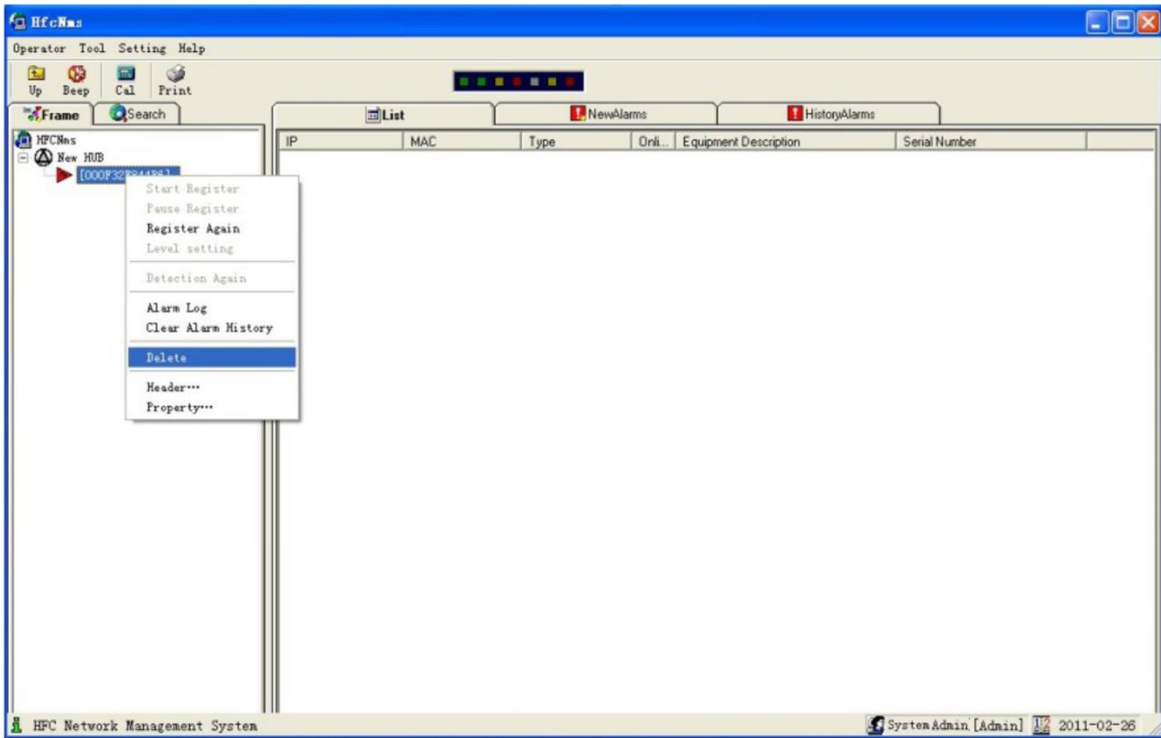


3.4 Add/Delete Equipment

1. Add New Equipments via IP Responder.



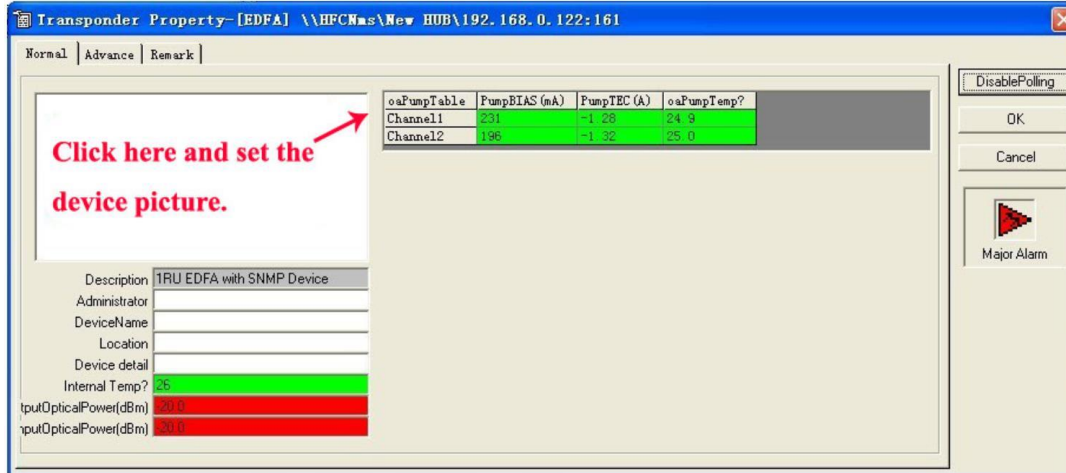
2. Delete Equipments (Click right, Choose "Delete").



3.5 View Status

See the working condition of equipments.

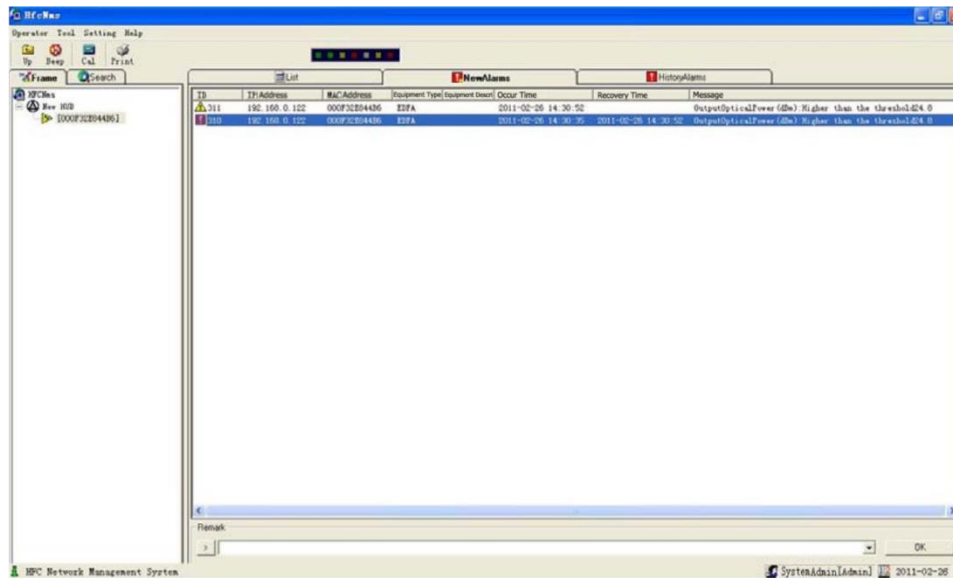
Please click twice of the equipments list on the left to see the parameters and working condition.



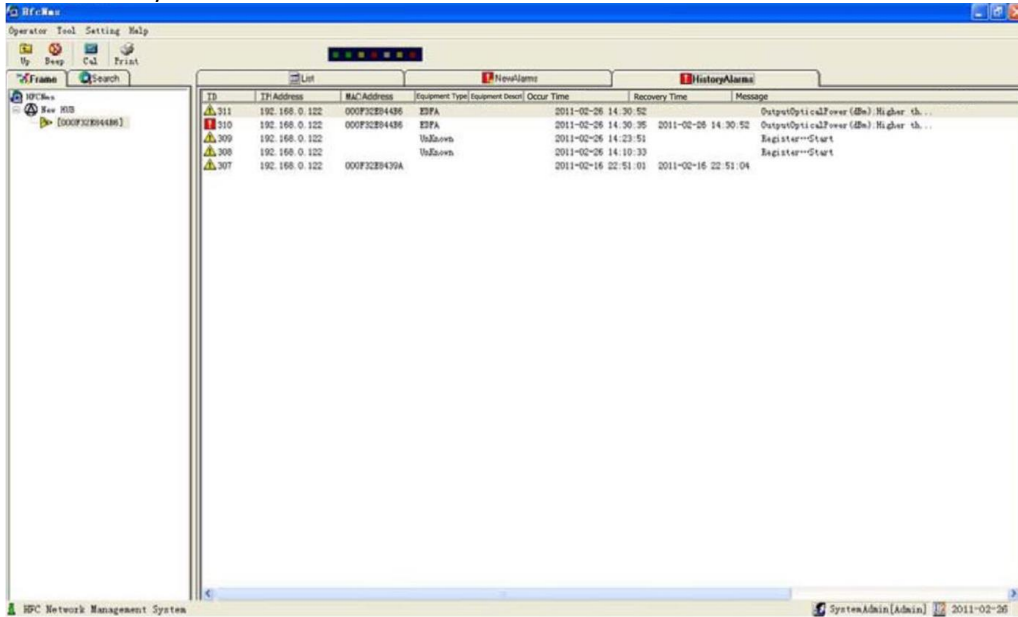
3.6 Alarm Management

1. View New Alarm / History:

- "New Alarm"

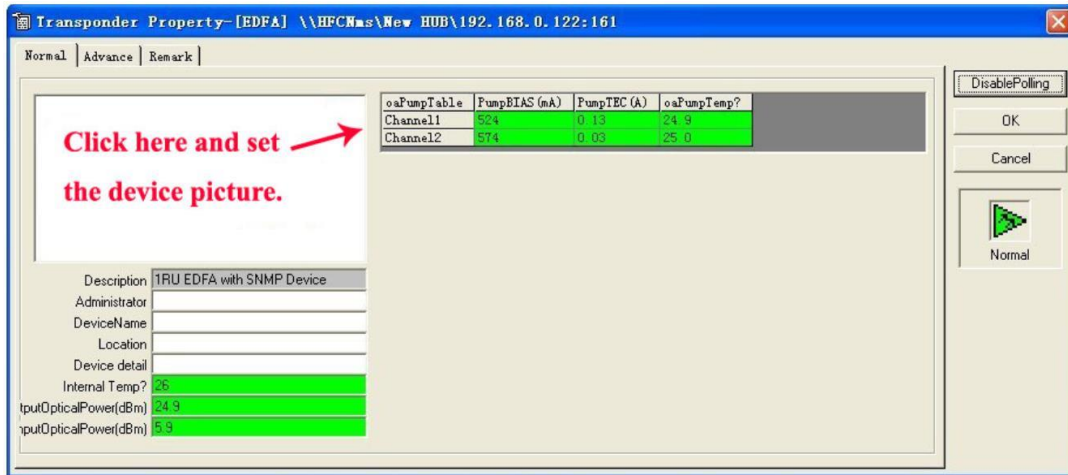


- “Alarm History”

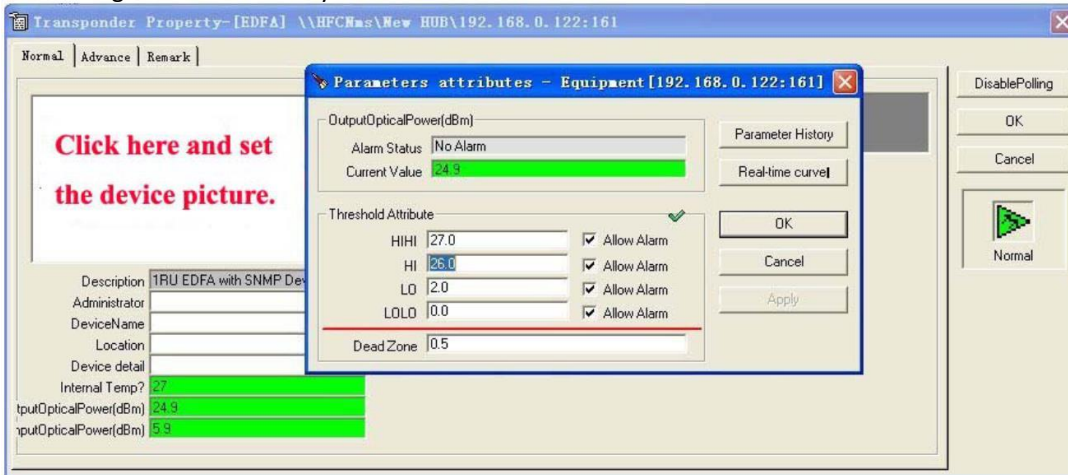


- Adjust thresholds for optical power, bias current

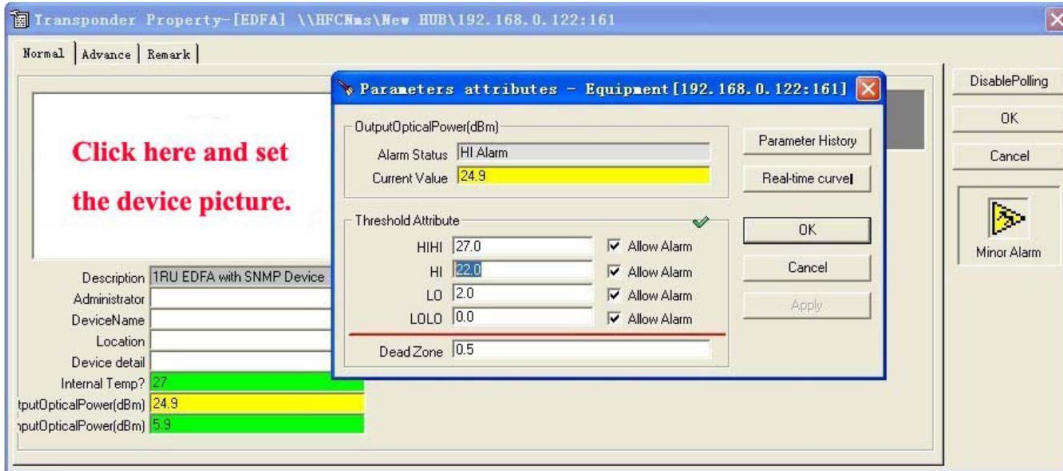
Eg: Change the normal alarm threshold and serious alarm threshold of “Output optical power”, firstly please click the “output optical power” twice, then you can see as follows:



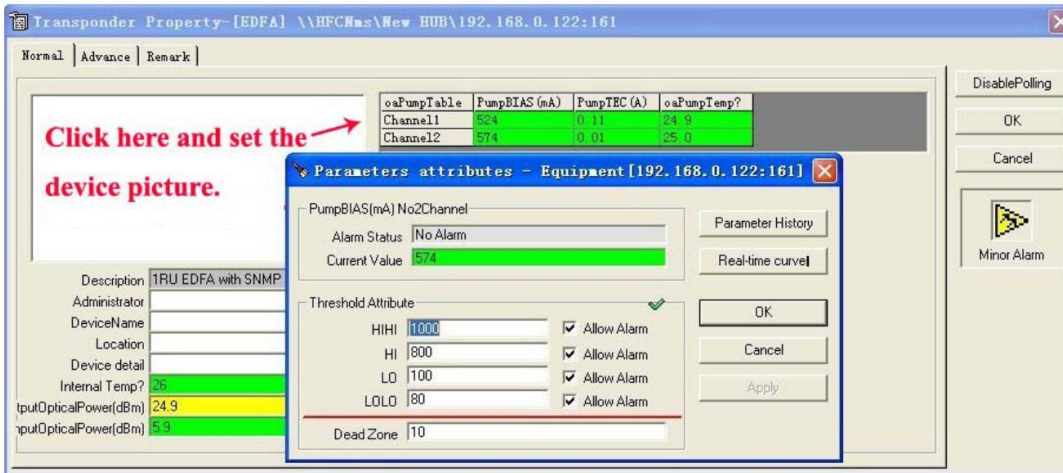
Then change the value directly.



Complete the modification, then press "ok" to execute.

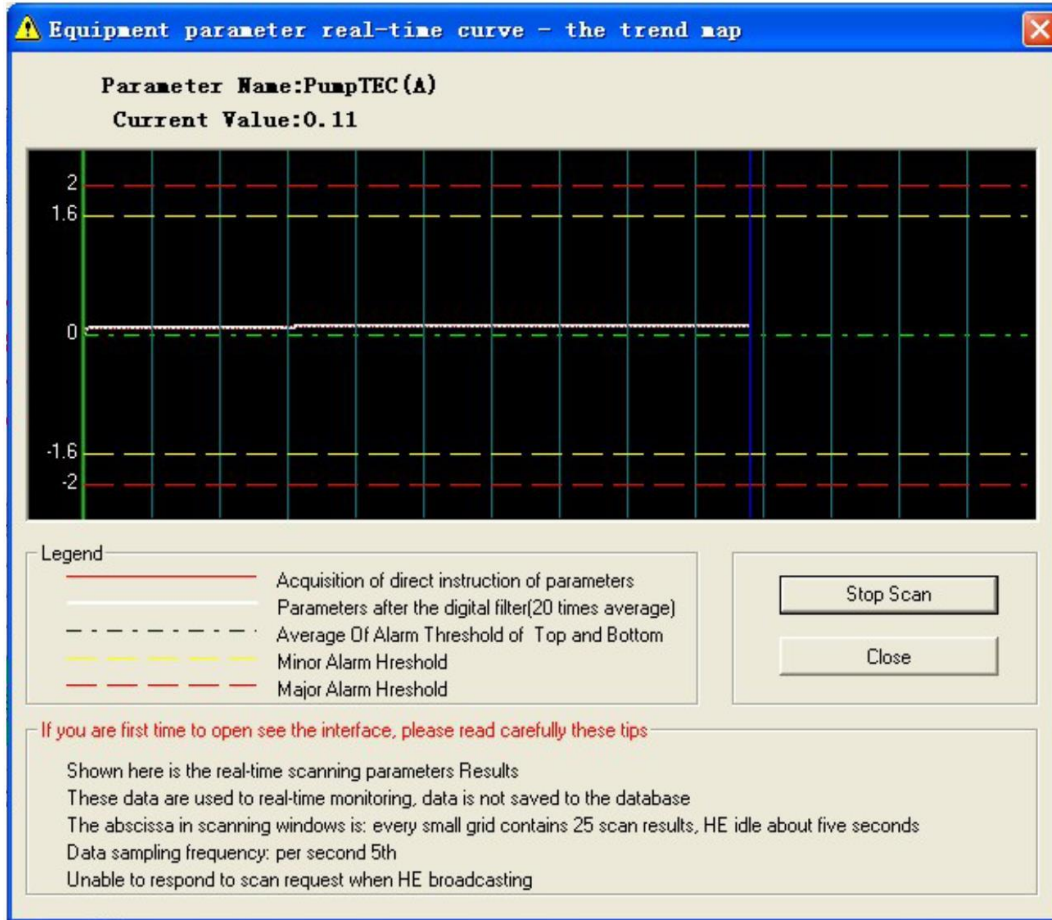


The same operation with other parameters such as BIAS CURRENT.

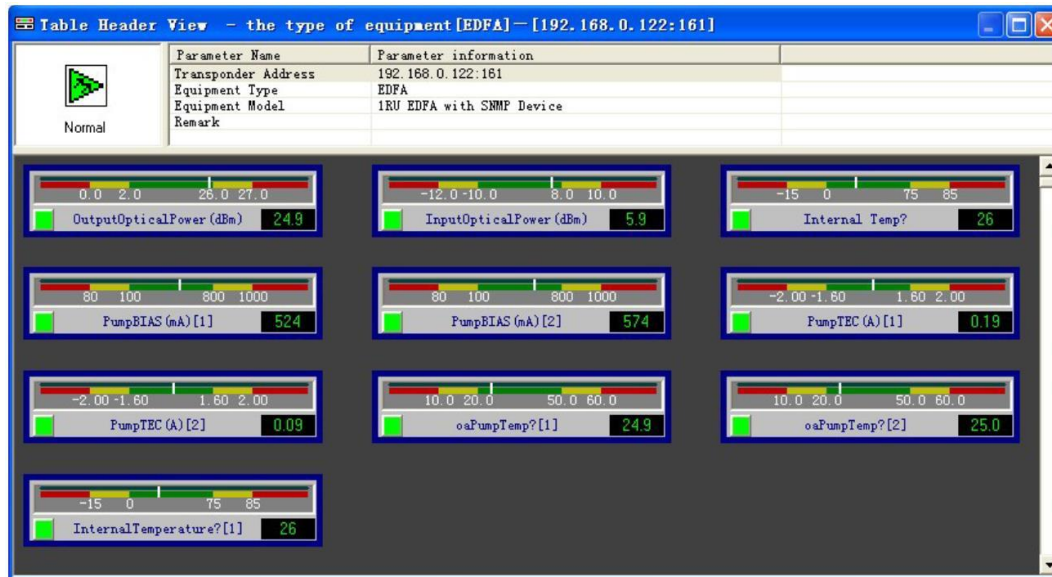


3.7 Advanced Functions

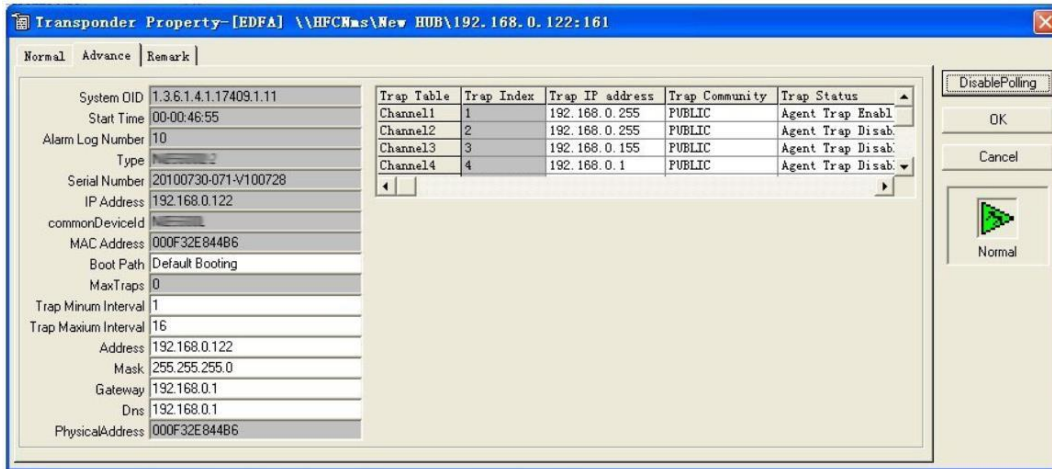
1. Real-time curve monitoring :



2. Table View

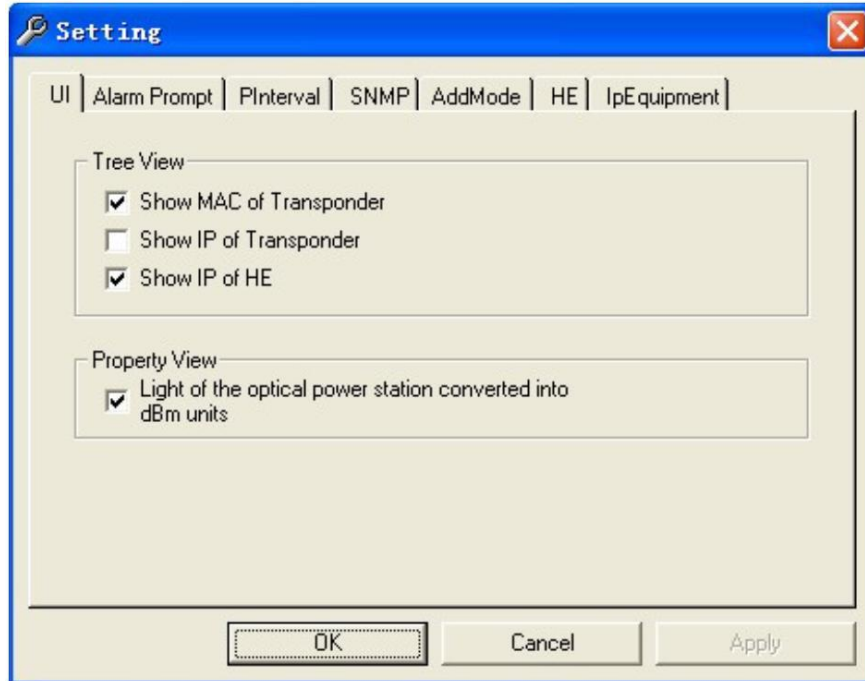


3. Device properties

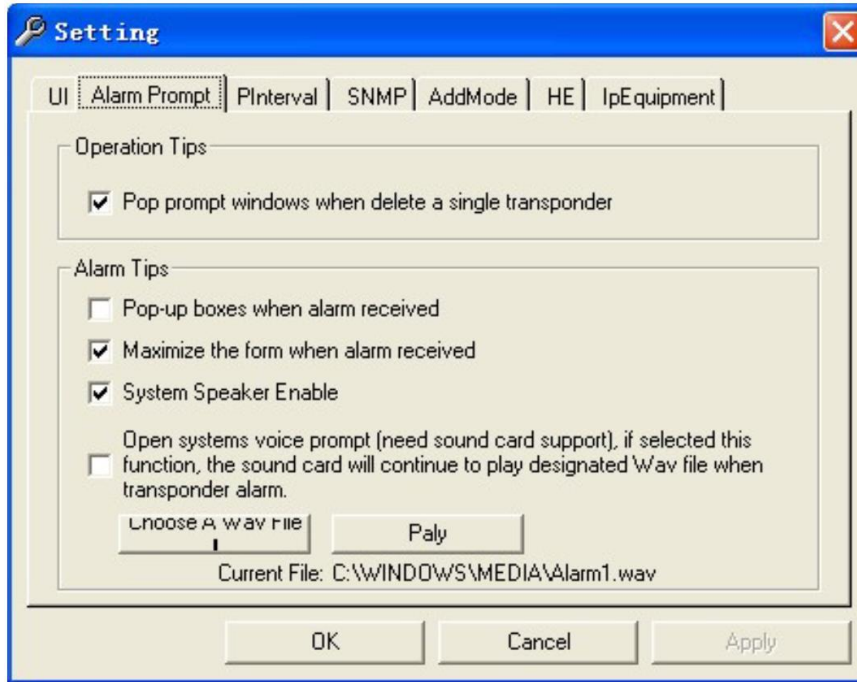


4. Setting voice alarm and pInterval time

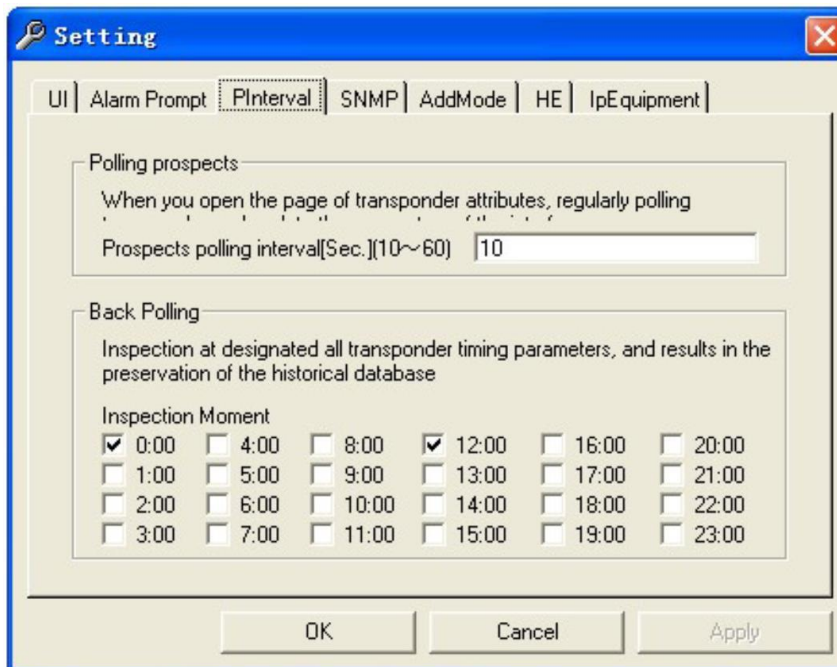
a) Tool—setting



b) Alarm—setting



c) PInterval—setting



3.8 Notes

1. Ensure same network segment.
2. Save configuration changes.



Ascent Communication Technology Ltd

AUSTRALIA

140 William Street, Melbourne
Victoria 3000, AUSTRALIA
Phone: +61-3-8691 2902

Hong Kong SAR

Room 1210, 12th Floor, Wing Tuck Commercial Centre
181 Wing Lok Street, Sheung Wan , Hong Kong SAR
Phone: +852-2851 4722

CHINA

Unit 1933, 600 Luban Road
200023, Shanghai, CHINA
Phone: +86-21-60232616

USA

2710 Thomes Ave
Cheyenne, WY 82001, USA
Phone: +1 203 350 9822

EUROPE

Pfarrer-Bensheimer-Strasse 7a
55129 Mainz, GERMANY
Phone: +49 (0) 6136 926 3246

VIETNAM

11th Floor, Hoa Binh Office Tower
106 Hoang Quoc Viet Street, Nghia Do Ward
Cau Giay District, Hanoi 10649, VIETNAM
Phone: +84-24-37955917

WEB: www.ascentcomtec.com

EMAIL: sales@ascentcomtec.com

Specifications and product availability are subject to change without notice.

Copyright © 2026 Ascent Communication Technology Limited. All rights reserved.

Ver. ACT_AT5000_NMS_QRG_V1b_Apr_2025