



Matrix KVM over IP Console

User Manual

Revision B

ACT Matrix KVM over IP Console

User Manual

ACT Document Number: Matrix KVM over IP Console

Manual Revision B

Copyright © 2024 Ascent Communication Technology Limited.

All rights reserved. Reproduction in any manner whatsoever without the express written permission of Ascent Communication Technology is strictly forbidden.

This document is produced to assist professional and properly trained personnel with installation and maintenance issues for the product. The capabilities, system requirements and/or compatibility with third-party products described herein are subject to change without notice.

For more information, contact ACT: support@ascentcomtec.com



Revision History

Revision	Date	Reason for Change
A	05/05/2024	Draft
B	05/06/2024	Initial release

Contents

1. Introduction	5
1.1 Overview	5
1.2 Features	5
1.3 Specifications	6
1.4 Apperance	7
1.5 Models and Options	8
2. Installation and Start-up	9
2.1 Rack Mounting	9
2.2 Installation KVM Components	9
2.3 KVM Adapter	10
2.4 Opening the Console	11
2.5 Closing the Console	12
2.6 Front Panel Instructions	12
2.7 Rear Panel Instructions	13
3. LED Operation.....	14
3.1 LED Function	14
3.2 Operating the Monitor	15
3.3 Key Combination Function	16
4. UI Interface Operating	17
4.1 Login UI Control Menu	17
4.2 UI Function Instruction	17
4.3 User Management	22
4.4 Security Management.....	23
5. Remote Control.....	25
5.1 Configure the Target Server	25

5.2 Remote WEB Interface Settings.....	26
5.3 Log In.....	28
5.4 Video Control Interface Menu.....	30
6. IP Menu Option.....	33
6.1 User Management.....	33
6.2 System Settings.....	37
6.3 Security Management.....	39
6.4 System Management.....	40
7. Appendix.....	42
7.1 Grounding Requirements.....	42

1 Introduction

1.1 Overview

The Ascent's IP-based KVM (IP-KVM) redirects the local keyboard, mouse and video data to remote management console. The operator can safely manage one or many computers locally at the server site or remotely via a standard internet browser. Securely gain BIOS level access to systems for maintenance, support or failure recovery over the internet.

The IP-KVM console integrates multiple KVM switches in a 1U height console. It can control multiple computers with a set of devices including monitor, keyboard and mouse; saving cost and space by consolidating the hardware to a single device.

The IP-KVM console is fast and easy to install. Simply connect corresponding cables to the correct ports of the KVM and its module without software configuration. Connect multiple computers with compact RJ-45 connectors and CAT5e/6/7 cables, transmitting distance is up to 100M.

1.2 Features

- Control up to 8 / 16 / 24 / 32 computers
- Support 1 local user and 2 remote users, port share mode allows local and remote users to gain access to a server simultaneously
- Easy-to-use switching by browser-based UI interface, hotkeys and pushbuttons
- Support servers with VGA/HDMI/DVI/DP port
- Multiplatform client support (Windows, Linux, Unix, Mac, Solaris (Sun), Redhat, Ubuntu)
- Support a graphical interface for intuitive and convenient human-computer interaction- local resolution is up to 1280x 1024@60Hz
- Support mouse synchronization mode-automatically synchronizes the local and remote mouse movements
- Video synchronization with local console - EDID information for local console display can be stored in the host module for video resolution optimization
- Keyboard and mouse emulation to ensure the normal booting
- Auto scan feature for monitoring user-selected computer
- Hot pluggable – add or remove computers without having to power down the switch
- Adaptive 10 / 100 / 1000 Mbps network
- WEB browser-based or KVM_Clients remote management
- BIOS-level access
- Video quality and video tolerance can be adjusted to optimize data transfer speed, up to 30 FPS
- Full screen or scalable video display
- Remote users and local users can control the same server synchronously
- Support AES / DES / 3DES encryption
- Support audit function-allows the administrator to audit the device through the system log and operation log
- Exit Macros support
- Configurable user and group permissions for server access and control
- Support firmware upgrade

1.3 Specifications

For 17"

Model		KVM1708	KVM1716	KVM1724	KVM1732
Computer Connections	Direct	8	16	24	32
	Max	8	16	24	32
Port Selection	Keyboard, Mouse	Button, UI, Web, Hotkey			
LCD Monitor	Model	SXGA TFT			
	View Area	17"			
	Optimum Resolution	1280×1024@60Hz			
	Color	16.7M			
	Brightness	250 cd/m ²			
	Contrast Ratio	1000 : 1			
	Pixel Pitch	0.264 (H) mm × 0.264 (W) mm			
Mouse	X/Y Resolution	>1000 points / inch, (40 points/mm)			
	Scroll Wheel	Supports Scroll Wheel function			
Keyboard		99 keys (82 keyboard + 17 number pad)			
Remote Management	Remote Control	KVM Control (ActiveX)			
	Management	Web			
	Security	DES Encrypted			
	Resolution	1920×1080@60Hz			
Power Input		100V to 240V AC , 50 to 60 Hz , <1.5 A			
Power Consumption		27W	23W	25W	27W
Operating Temperature		0 to 50 °C			
Store Temperature		-20 to 60 °C			
Humidity		0 to 80% RH, non-condensing			
Net Weight		13kg	13kg	13.2kg	13.2kg
Product Dimension (W × D × H)		448mm × 581mm × 42.5mm			
Package Dimension (W × D × H)		765mm × 615mm × 185mm			

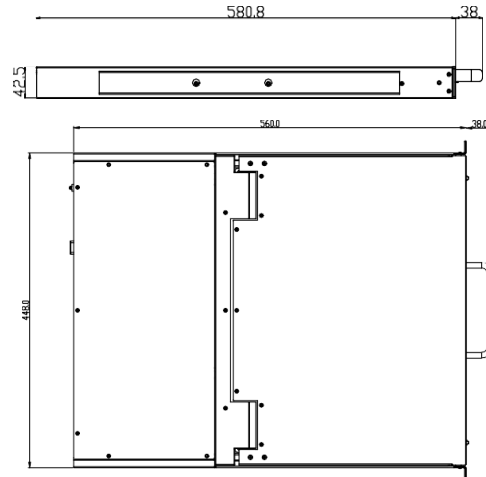
For 19"

Model		KVM1708	KVM1716	KVM1724	KVM1732
Computer Connections	Direct	8	16	24	32
	Max	8	16	24	32
Port Selection	Keyboard, Mouse	Button, UI, Web, Hotkey			
LCD Monitor	Model	SXGA TFT			
	View Area	19"			
	Optimum Resolution	1280×1024@60Hz			
	Color	16.7 M			
	Brightness	250 cd/m ²			
	Contrast Ratio	1000 : 1			
	Pixel Pitch	0.2928(H) mm × 0.2928(W) mm			
Mouse	X/Y Resolution	>1000 points / inch, (40 points/mm)			
	Scroll Wheel	Supports Scroll Wheel function			
Keyboard		99 keys (82 keyboard + 17 number pad)			

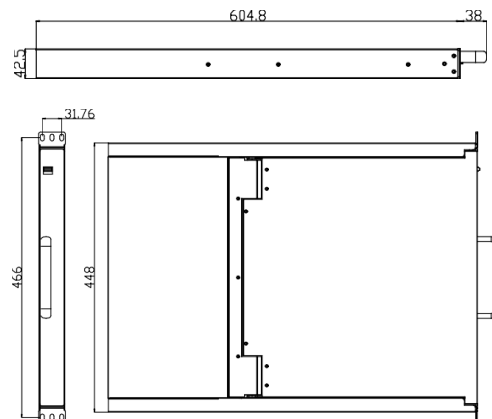
Model	KVM1708	KVM1716	KVM1724	KVM1732
Remote	Remote Control Management	KVM Control (ActiveX) Web		
	Security	DES Encrypted		
	Resolution	1920×1080@60Hz		
Power Input	100V to 240V AC , 50 to 60 Hz , <1.5 A			
Power Consumption	23W	25W	27W	29W
Operating Temperature	0 to 50 °C			
Store Temperature	-20 to 60 °C			
Humidity	0 to 80% RH, non-condensing			
Net Weight	13.4kg	13.4kg	13.6kg	13.6kg
Product Dimension (W × D × H)	448mm × 605mm × 42.5mm			
Package Dimension (W × D × H)	765mm × 615mm × 185mm			

1.4 Appearance

Console size dimension 17"



Console size dimension 19"



1.5 Models and Options

KVM7000 Series

KVM1708

Description

A 17-inch KVM has 8 ports and supports one remote user and one local user.

With 17 "LED display full screen, resolution :1280*1024@60Hz

KVM1716

A 17-inch KVM has 16 ports and supports one remote user and one local user.

With 17 "LED display full screen, resolution :1280*1024@60Hz

KVM1724

A 17-inch KVM has 24 ports and supports one remote user and one local user.

With 17 "LED display full screen, resolution :1280*1024@60Hz

KVM1732

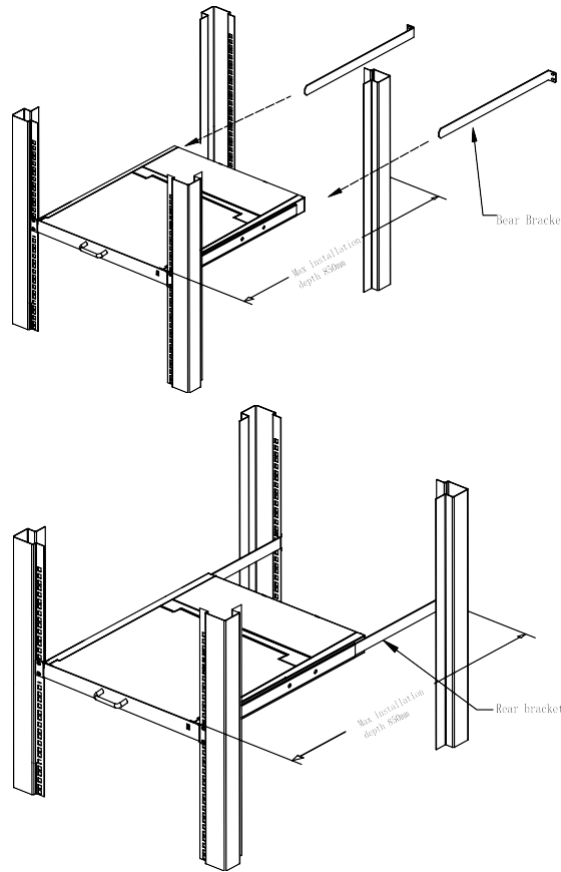
A 17-inch KVM has 32 ports and supports one remote user and one local user.

With 17 "LED display full screen, resolution :1280*1024@60Hz

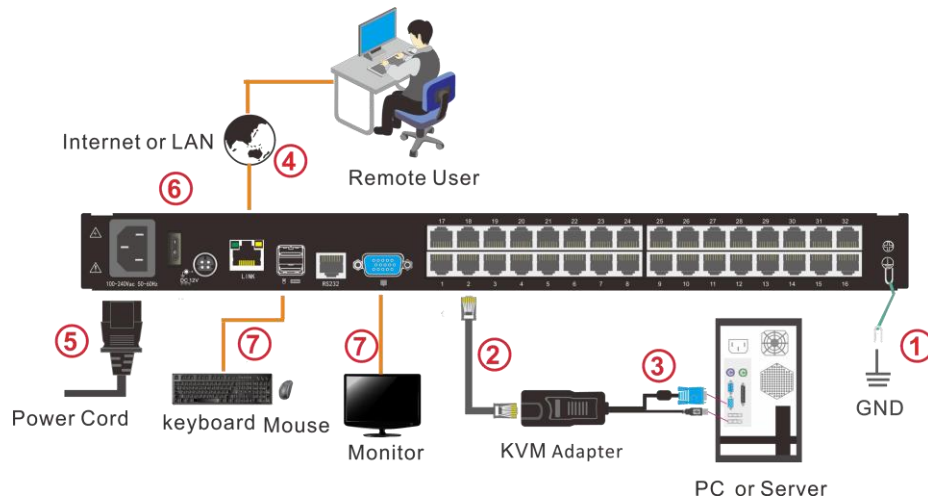
2 Installation and Start-up

2.1 Rack Mounting

A standard rack mounting kit is provided to mount the switch in a depth of 600-850mm (17"), 716-825mm (19") in a standard 19" rack. For other mounting distances, the rear brackets need to be customized accordingly. With one person hold the switch in place, the other person slides the L bracket into the switch's side mounting brackets from the front to the back, then screws the brackets to the rack (see below installation drawing).



2.2 Install KVM Components

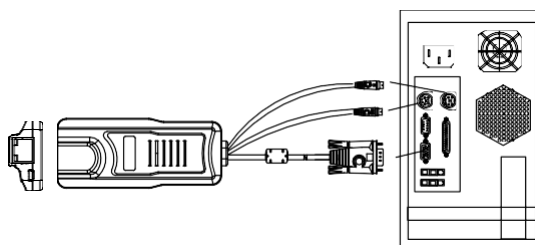


Installation Steps:

1. Make sure the KVM console has been connected to the ground.
2. Connect the KVM adapter to the PC or Server.
3. Connect the KVM adapter to the KVM port with a CAT5 cable.
4. You can remote control the KVM switch via IP.
5. Using power adapter to connect the KVM into 220V AC power supply.
6. Power on the switch
7. Connect the external keyboard, mouse and monitor (optional)

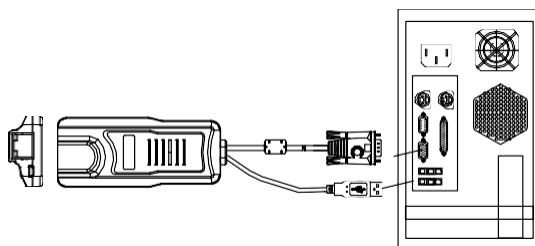
2.3 KVM Adapter

PS/2 Adapter



Model No.	Keyboard/Mouse	PC	Explanation
KCM-1100P	PS/2	VGA	Connect to PS2/VGA server

USB Adapter



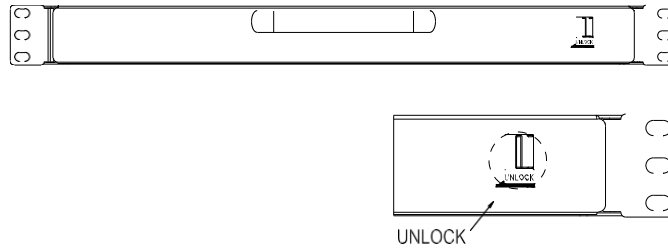
Model No.	Keyboard/Mouse	PC	Explanation
KCM-1200U	USB	VGA	Connect to USB/VGA server
KCM-3200H	USB	HDMI	Connect to USB/HDMI server
KCM-2200D	USB	DVI	Connect to USB/DVI server
KCM-4200P	USB	DP	Connect to USB/DP server

LED Indicator of the KVM Adapter

Components	Function	Description
Green	Online	Indicates that the corresponding host has been connected to the KVM switch and Power On.
Orange	Selected	Indicates that the corresponding host is in use.

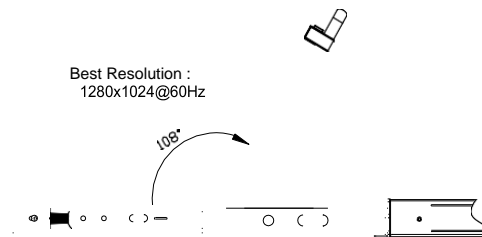
2.4 Opening the Console

1. Disengage the release catch

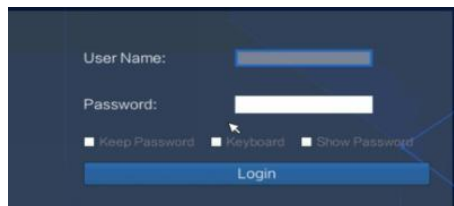


Note: The release lock can only do horizontal locking, it doesn't bear any load.

2. Pull the KVM console all the way out until it clicks into place.
3. Rotate the LCD module all the way back to expose the LCD screen; the LCD module can be rotated up to 108°.



4. The KVM makes two "beep" sounds after power on, the orange light keeps flashing and an UI window appears for you to input user name and password.

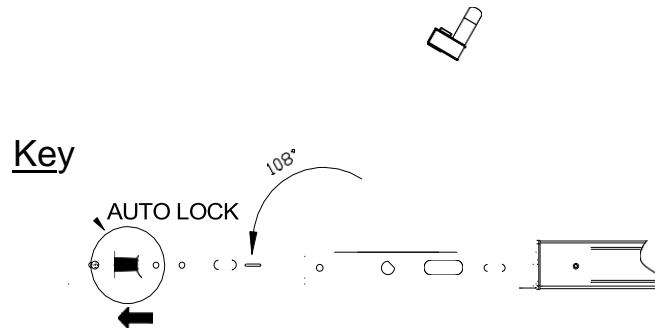


User Name	admin
Password	admin

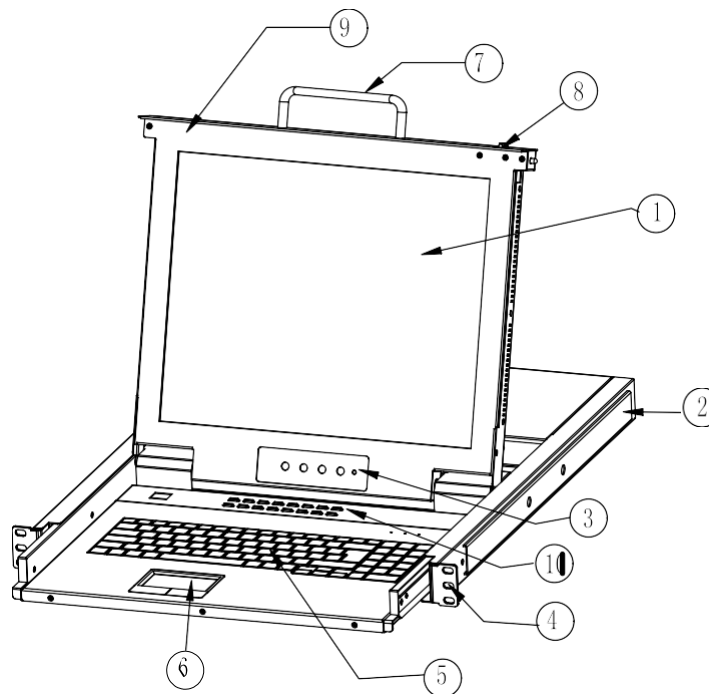
5. LCD panel is powered on when the power LED is green.
6. Power on the computer or server after power on the KVM.

2.5 Closing the Console

- Close the LED display panel and the power automatically shut down.
- Push the release catch in the direction of the arrow; push the LED panel all the way in until it automatically locks up.

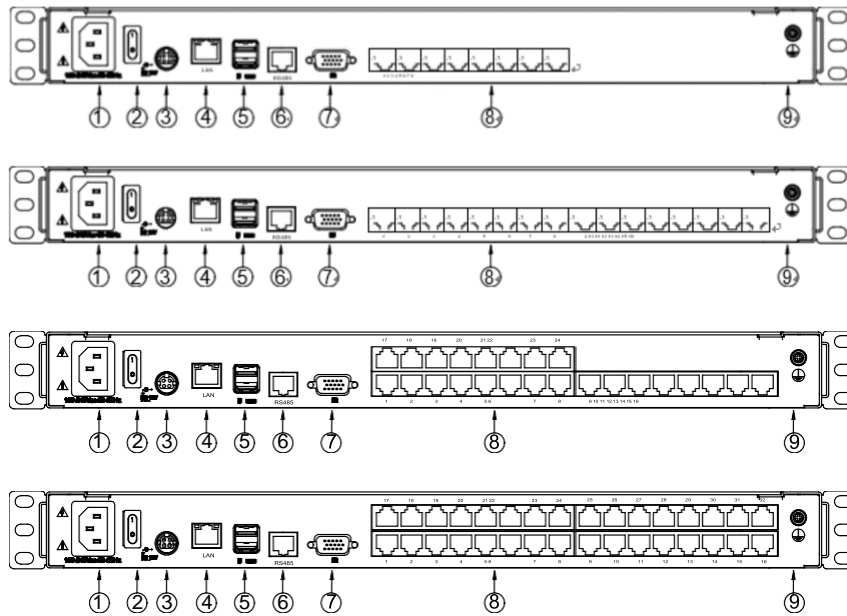


2.6 Front Panel Instructions



Port	Item
1	LED Monitor
2	Rear Bracket Slot
3	LED OSD Controls
4	Front Bracket
5	Keyboard
6	Touchpad
7	Handle
8	Release Catch
9	Display Panel
10	Switch LED

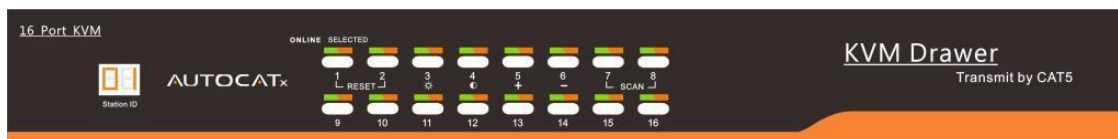
2.7 Rear Panel Instructions

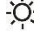


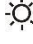


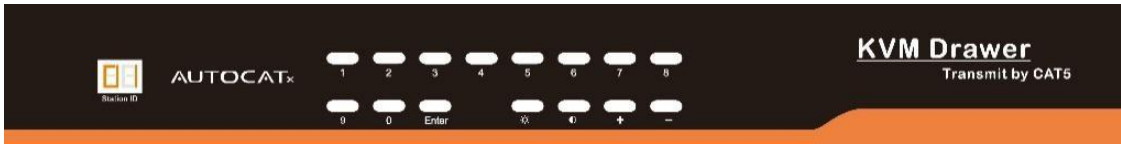
Port	Item
1	Power Input (AC)
2	Power Switch
3	Power Input (DC)
4	LAN Port
5	USB Port
6	RS485 Port
7	Monitor Port
8	PC Connecting Port
9	Ground Screw

3 LED Operation

3.1 LED Function



No.	Components	Function
1	1-16 Reset Scan Brightness  Definition  Initialize  	Switching freely from port 1 to port 16 Press 【1】 and 【2】 at the same time for three seconds resets the keyboard and mouse Press 【7】 and 【8】 at the same time for three seconds enters the auto scan mode. Press 【3】 for three seconds enters brightness adjusting mode. 33 are flashing on the LED tube. Then press 【5】 , 【6】 to adjust. Press 【3】 exits or waits for five seconds and it will auto-exit. Press 【4】 for three seconds enters definition adjusting mode. 44 are flashing on the LED tube. Then press 【5】 , 【6】 to adjust. Press 【4】 exits or waits for five seconds and it will auto-exit Press 【6】 for three seconds will initialize the brightness and definition of each port.
2	Port Selection Buttons & LEDs	Indicator LEDs are built into the switches, the online LED light is on the left and the selected LED light is on the right. An online LED light (green) indicates that the KVM has connected to its corresponding computer and power on. A selected LED light (orange) indicates that the computer attached to its corresponding port is up and running.
3	Station ID	Display the current port



No.	Components	Function
1	0~9 +Enter	Switching from port 1 to port 32 Port 8 : If you want to switch to Port 8, press 【s 8】 , and the LED light displays, then press “Enter”, you will come to Port 8. Port 32: If you want to switch to Port 32, press 【3】 and 【2】 , the LED light displays 32 , and then press “Enter”, you will come to Port 32.
2	(+, -)	Adjust Brightness Press , the LED light blinking with 88 , and then press “+” and “-“to adjust the brightness.
3	(+, -)	Adjust Definition Press , the LED light blinking with 88 , and then press “+” and “-“to adjust the definition.
4	Station ID	Display the current port

3.2 Operating the Monitor



The LED OSD allows you to set up and configure the LED display.

Buttons	Functions
MENU SELECT EXIT/AUTO	Brings up the main menu. Exits the current menu and returns to the previous menu or exits the LED OSD.
SL-/SL+	Press AUTO for automatic configuration. Moves the menu to make corresponding adjustment.
LED state	Green: Running Red: Power off or access nonstandard VESA signal Flashing green: Energy saving mode or no signal

Press AUTO if the screen migrates after power on or under other circumstances, then the screen auto-configures to its best display state.

Note:

- It may not be adjusted to its best state if part of the display mode is not standard VESA mode. If so, return back to OSD menu to RESET, then it will revert back to normal.
- It is recommended to set up the display mode at 1920×1080, refresh rate at 60Hz.

3.3 Key Combination Function

If you want to set other hotkeys to pop up the UI interface or key combination switch, set up the via the local console, **【System Settings】** --> **【Device info】** .

Item	Description
Pop up the UI interface	Double click 【L_Ctrl】 Double click 【L_Alt】 Double click 【Scroll Lock】 Double click 【Caps Lock】
Hot key	【L_Alt】 + 【L_Ctrl】 【L_Win】 + 【L_Ctrl】 【L_Alt】 + 【L_Win】

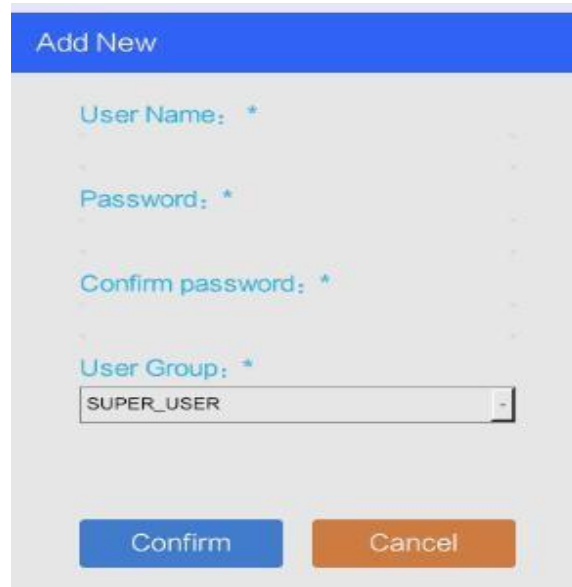
Hotkey commands are as follows :

Hot key + the corresponding function key

Function	Operating	Function description
Port switch	+Number	Skip ports from 1 to 16
	+ 【↑】 / 【→】	Skip to previous port
	+ 【↓】 / 【←】	Skip to next port
Brightness	+ 【+】	+
	+ 【-】	-
Definition	+ 【>】	+
	+ 【<】	-
Reset Video	+ 【R】	Reset the video
Lock KVM	+ 【L】	Lock KVM and a user login window appears

User List Interface: List all registered users, you can see more by page turning

- User name or full user name search
Input user name, it shows related users which make it convenient when you have a large number of users.
- Add User
Click **【add】** button, the window below appears:



In this window, “*” is required content

- 1) User name: user name can only be low case letter, number and “_”.
- 2) Enter password: without strong password protection, the password can only compose of 1-16 letters, numbers or special characters (-@. \$! _); with strong password protection, the password should be filled in according to the rules of strong password protection. More details please check “ **【security management】** → **【security setting】** → **【strong password】** ”.
- 3) Confirm password: The confirm password should be the same as the setting password.
- 4) User group: Select the corresponding user group.

4.2.2 User group list



Num	User Group Name
0	SUPER_USER
1	1
2	2
3	3
4	4

User Group List Interface: List all registered users, you can see more by page turning

- User group name search
Input user group name, it shows related user groups which make it convenient when you have a large number of users.

- Add user group

Click **[add]** button, the window below appears.

- 1) User group name: It contains only low case letter, number and “_”.
- 2) Authority: mainly refers to management authority and operation authority, click show more, authority menu appears(shown in picture above), click show less, authority menu disappears.
 - Port Access: Access to each KVM port and control target server.
 - User Management: User management permission
 - Device Setting: KVM device management permission
 - Security Management: Security management permission
 - System Maintenance: System maintenance permission
- 3) Port permission: Set up access and operating permission for each port
 Modify password
 Change the User login password.

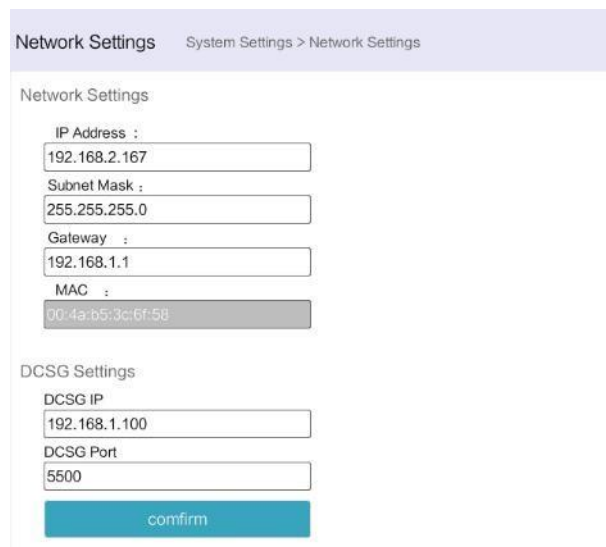
In this window, “*” is required content

- 1) User name: it contains only low case letter, number and “_”
- 2) Enter password: without strong password protection, the password can only composed of 1-16 letters, numbers or special characters(-@.\$! _); with strong password protection, the password should be filled in according to the rules of strong password protection. More details please check “security management— > security setting— > strong password”
- 3) User group: Select the corresponding user group

4.2.3 System



4.2.4 Network Settings

A screenshot of the 'Network Settings' configuration page. The breadcrumb trail shows 'System Settings > Network Settings'. The page is titled 'Network Settings' and contains two sections: 'Network Settings' and 'DCSG Settings'.
Under 'Network Settings':
- IP Address : 192.168.2.167
- Subnet Mask : 255.255.255.0
- Gateway : 192.168.1.1
- MAC : 00:4a:b5:3c:6f:58
Under 'DCSG Settings':
- DCSG IP : 192.168.1.100
- DCSG Port : 5500
A 'confirm' button is located at the bottom of the form.

IPV4 address setting:

- IP Address: Preset IP address
- Subnet Mask: Generally, it should be consistent with other devices in the network.
- Default gateway: Generally, it should be consistent with other devices in the network.
- MAC Address: Physical address
- DCSG IP: The IP address should be the same with the Authentication Server IP address.
- DCSG Port: The Port should be the same with the Authentication Server Port.

4.2.5 Date Time

Date Settings System Settings > Date Settings

Date Settings

User setting time

Date Settings:

1970-01-14

Time Setting:

13:48:29

Synchronize with the NTP server:

Time server:

202.120.2.101

Select time zone:

West 12 (central Pacific)

confirm cancel

System time setting:

- User-defined time: manually set by the user.
- Synchronize with NTP server: the system automatically updates the time according to the time server.

4.2.6 Equipment Information

Technology KVM Over IP management system

KVM User System Security Maintain Help

Home > System Settings > Equipment information

Device name
IPKVM

KVM Hot-key
Double-click the left Ctrl

Function Hot-Key
IAlt + ICtrl + Function key

Setting Module EDID
1280X1024

OK

Function key table

1,2,3...n	Switch the port
+	VGA Bright +
-	VGA Bright -
>	VGA Gain +
<	VGA Gain -
↓	Switch Next port
↑	Switch Previous port
→	Switch Next port
←	Switch Previous port
L	Logout
R	Reset VGA

4.2.7 Encoding Parameters



4.3 Security



4.3.1 Security Settings



1. Login restriction: user name login restriction
 - Single sign on restriction: If one user name is logged in, it can no longer log in with this user name.
 - Enable passwords expiration: Current password use days ranges from 1-365 days, if it is enabled, the default is 50 days.
 - Free user logs off: After the user logs in, if there is no operation, and when the set time is exceeded, the user automatically logs out and exits.
2. Login lock
 - Disable Lock: When it is selected, login lock will be canceled.
 - Account lock: Set trying number of times for login attempts failed.
 - Timed lock: Set the account lock time when account login failed attempts are over the setting number of times.
3. Strong password
 - Enable strong password: When it is selected, the original password will be forced to be changed.
 - Password history depth: New password cannot be the same as the latest 3 default passwords, this number can be changed, it ranges from 1-10.
 - Strong password length: From 1-bit to 16 bits

4. Encryption mode
- Local information encryption mode:
 - DES
 - AES128
 - AES256
 Three encryption schemes and one un-encryption scheme.
 - Encryption mode is applied to KVM and virtual media: Applied when it is selected.

4.3.2 Audit Log

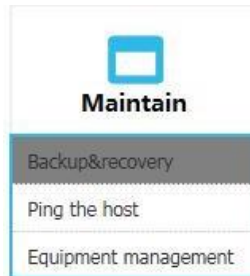
Home > Security Management > Audit log

Date: 1970-01-14 00:00:00 - 1970-01-14 13:49:28 Maintype: ALL subtypes: ALL Search

Num	Date	Event	Instructions
01-01			
01-02			
01-03			
01-04			
01-05			
01-06			
01-07			
01-08			
01-09			
01-10			
01-11			
01-12			
01-13			
01-14			
01-15			
01-16			

4.4 Maintain

Provide system maintenance tools such as test tools, data backup and restart.



4.4.1 Backup & Restore



- Backup:** Backup current system settings.
- Restore:** Restore the last backup of system.
- Factory Reset:** Restore to factory state (KVM must be restarted to take effect).

4.4.2 Ping the host

Home > System maintenance > Ping the host

IP address :

4.4.3 Update

Home > System maintenance > equipment managment

Local upgrade mode:

Reboot Mode:

5 Remote Control

5.1 Configure the Target Server

The KVM target server is the server that connected to the IP KVM Switch. Before install and use the IP KVM Switch, we need to configure the target server first. Please refer to below configuration instructions:

1. The IP KVM switch supports below two mouse mode:

- Absolute mouse mode
- Relative mouse
- Intelligent mouse mode

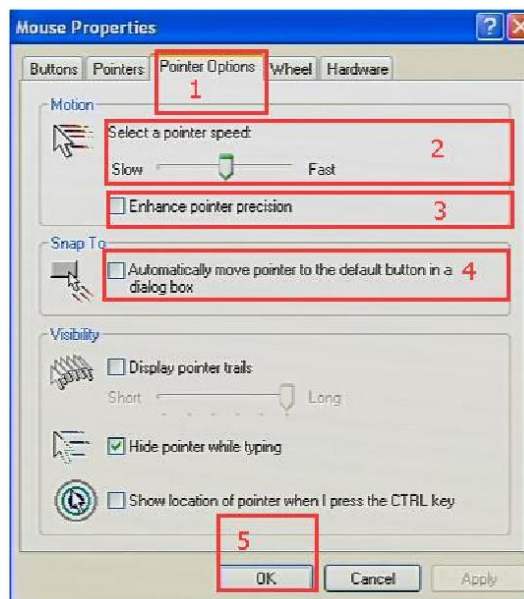
Mouse configuration is different for different operating systems; please refer to below detail instructions for mouse configuration.

1) Mouse and display configuration on Windows server 2003 and above version, Windows XP and above version
Operating systems: Windows server 2003, Windows server 2005, Windows server 2008, Windows server 2012; Windows XP, Windows7, Windows8, Windows10.

a) Set Mouse Precision

【Start】 → 【Control Panel】 → 【Hardware】 → 【Mouse】

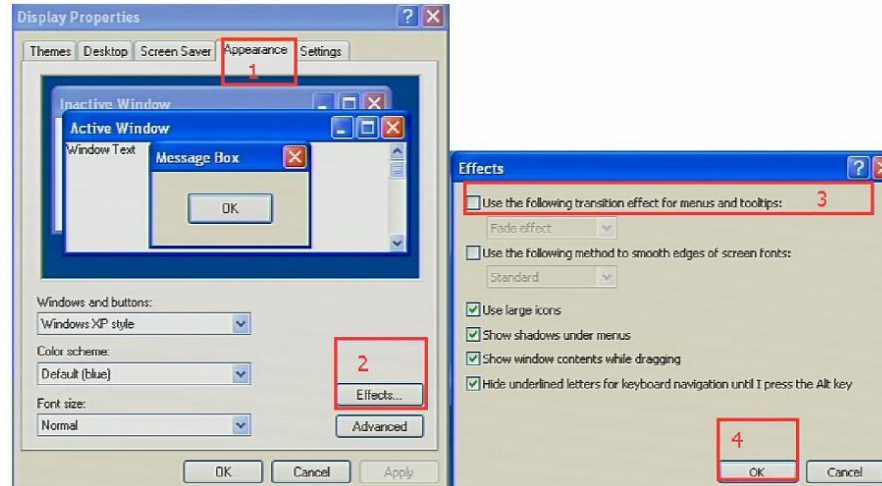
b) Please follow the steps below to finish the setting.



2) Set up the display of the target server under Windows XP, Windows 2003, Windows2008

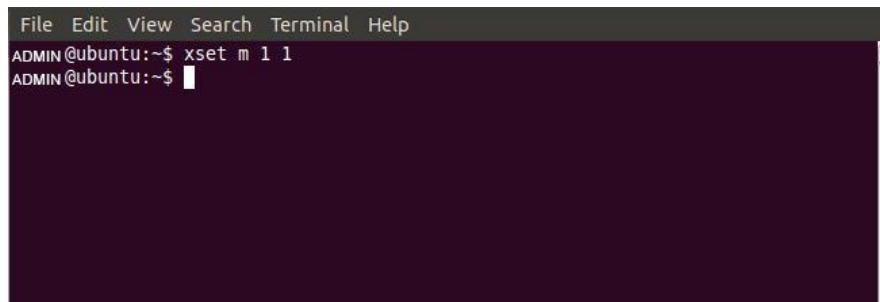
a) 【Start】 → 【Control Panel】 → 【Hardware】 → 【Display】

b) Please follow the steps above to finish the setting.



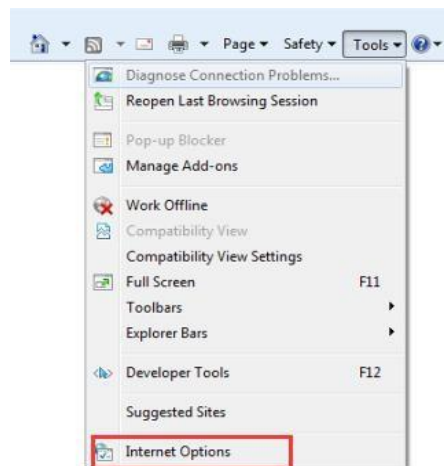
- 3) Configure the mouse under Linux (ubuntu 10)

Input “**xset m 1 1**” in the Linux command line terminal and press [Enter] to finish the mouse setting, as shown below.



5.2 Remote WEB Interface Settings

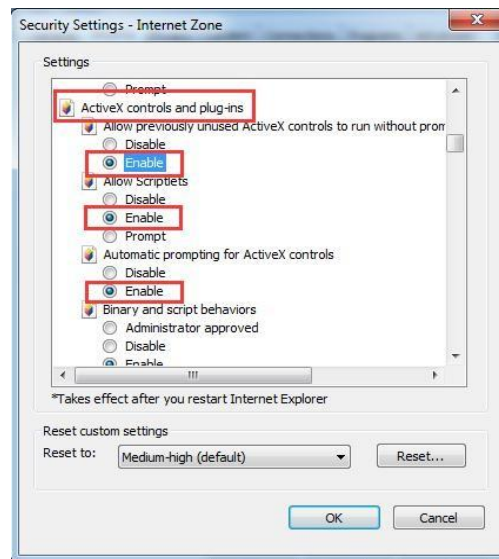
1. Install and open IE browser, click **【top-right settings】** → **【Internet Options】** .

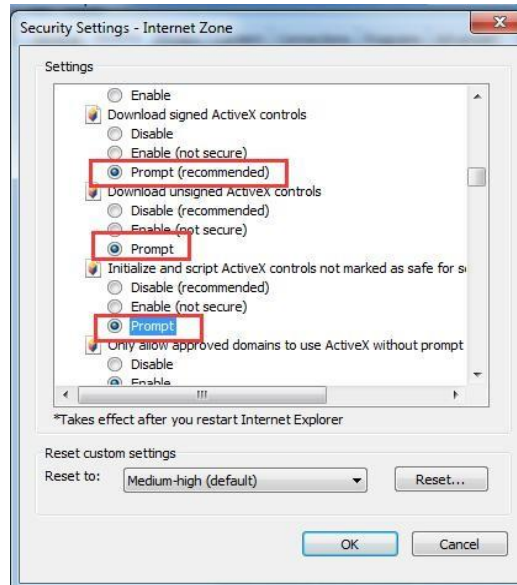


2. Click **【Security】** → **【Custom Level】** .

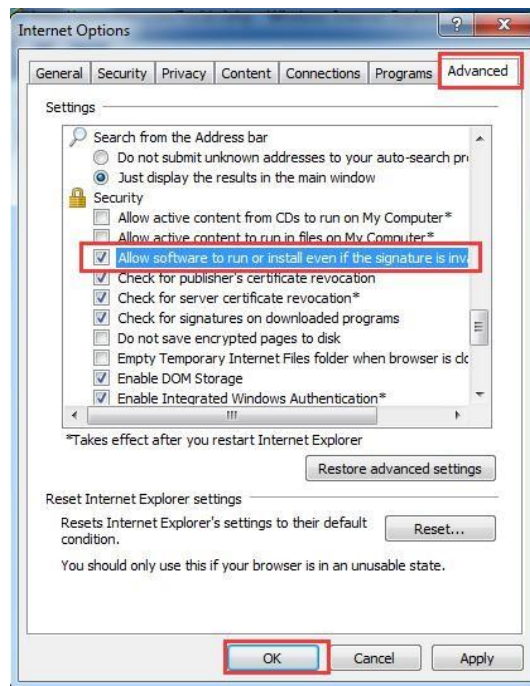


3. Click **【ActiveX controls and plugins】** .





4. Click **【Advanced】** , find **【Allow software to run or install even if the signature is invalid】** and select it.



5.3 Log In

Default Items	Default Value
User name	admin
Password	admin
IP address	192.168.1.167

Notice: For security, please change the password after the first login differentiating between capital and lowercase letters.

After connecting the device, open the Internet explorer web browser: [http:// 192.168.1.167](http://192.168.1.167).

USERNAME: admin
PASSWORD:
LOGIN

Default Items	Default Value
User name	admin
Password	admin

After logging in for the first time, a prompt for loading the ActiveX will appear below the browser. Clicking **“Allow”** will bring up the Download Video Plugin dialog box. Click **“OK”** to use the video plugin.

Management system

Home > Port access > Port list

Each page shows: 16

Number	Port name	State	Port permission
3	Port_003	connect	control
1	Port_001	close	control
2	Port_002	close	control
4	Port_004	close	control
5	Port_005	close	control
6	Port_006	close	control
7	Port_007	close	control

Access status of the KVM ports, three connection status: 1. Busy, 2. Connect, 3. Close.

- “Connect” shows the target KVM is connected to the KVM port; users can access to the target anytime.
- “close” shows that the KVM is not connected to the KVM adapter or the target server, or the target server is not boot up.
- “busy” shows that port is access by local or remote users.

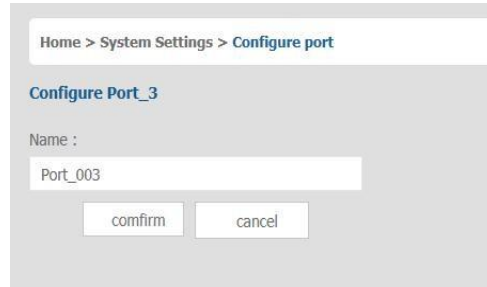
5.3.1 Edit Port Name:

Management system

Home > Port access > Port list

Each page shows: 16

Number	Port name	State	Port permission
3	Port_003	connect	control
1	Port_001	close	control
2	Port_002	close	control
4	Port_004	close	control
5	Port_005	close	control
6	Port_006	close	control
7	Port_007	close	control



5.4 Video Control Interface Menu



- 【Hide or Show Toolbar】
- 【Setting Option】
- 【Send Ctrl+Alt+Del】
- 【Mouse Synchronization】
- 【Single Mouse】
- 【Adaptive Window】
- 【Source video params】
- 【Full Screen】

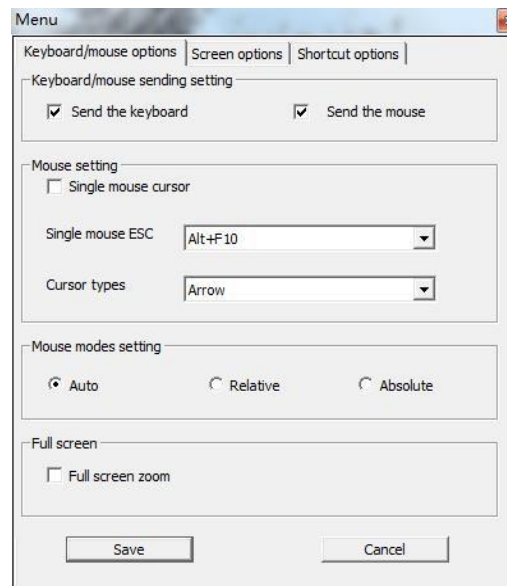
1) **Hide or Show Toolbar**

When the video window starts, the toolbar is always displayed by default.

Click the icon, the toolbar will automatically hide. If the mouse is moved to the toolbar position again, the toolbar will be displayed.

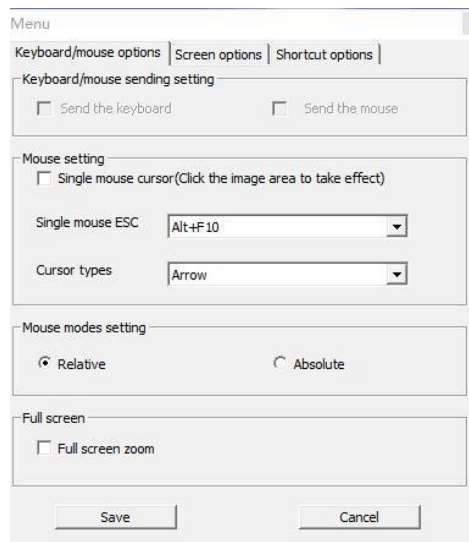
2) **Setting Options**

- a) **Keyboard & Mouse Options**
When user has the authority below

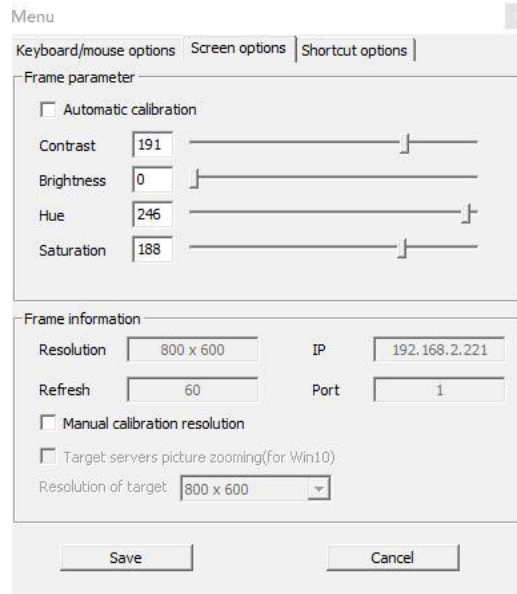


- Keyboard/mouse sending setting
 - Send the keyboard: Keyboard data can be sent to the target server through the video window so that it can control the target server's keyboard.
 - Send the mouse: Mouse data can be sent to the target server through the video window so that it can control the target server's mouse.
- Mouse Setting
 - Single mouse cursor: when single mouse chosen, target server's mouse will show and remote user's mouse will hide.
 - Single mouse Esc: press the keyboard "Alt + F10" exit the single mouse mode.
 - Cursor types: It can set remote user's mouse cursor type in double mouse mode
- Mouse Mode Setting:
 - Relative mode: Relative mode is compatible with almost all the operating systems; the factory default mode is relative mode.
 - Absolute mode: The absolute mode is not compatible with LINUX operating system.
- Full Screen Setting
 - Full Screen Zoom: If the "Full Screen Zoom" is disabled, the video will be displayed in the remote full screen; If the "Full Screen Zoom" is enabled and the target server's resolution is different from the remote user computer's resolution (the resolution of the general target server is less than the resolution of the remote user computer), the video plug-in will display the screen in the middle of the screen according to the resolution of the target server.

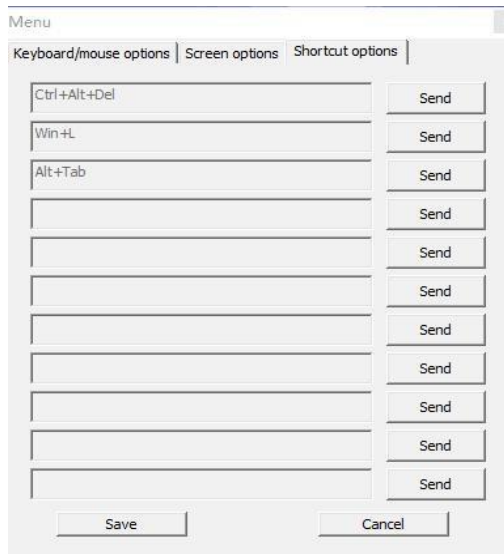
When users only have permission to view, remote users can only view the video window and cannot control it



- b) Display option
- Display option dialogue shows screen parameters and screen information
- Frame Parameter
 - Automatic calibration: The video window will automatically adjust the screen parameters of the target server to the default best effect.
 - Contrast, brightness, hue and saturation: if "automatic calibration" is disabled, users can customize screen parameters of target server.
 - Frame information
 - Resolution: it shows the resolution of the target server. When the target server's platform is win10, it shows the resolution of video
 - IP address: KVM switch's IP address
 - Refresh Rate: video refresh rate
 - Port number: video port number
 - Manual calibration resolution: when the resolution of the target server is not consistent with the resolution of the video window, it can manually calibrate the resolution after calibration
 - Target server resolution: resolution selection of manual calibration.
 - Target server's picture zooming: Under the win10 system, if the resolution is not the best resolution, the win10 system will zoom the video screen, and the video window cannot automatically identify whether the video source picture is zooming or not, then the user need to select the option by its own.



- c) **Keyboard Shortcuts**
Support 11 keyboard shortcuts, each with a maximum of 6 keys.
It can save shortcut keys and can be directly used when logging in next time.



Click the blank input box to display the virtual keyboard, and click the keys on the virtual keyboard to display the input box.




d) Send

Send Ctrl+Alt+Del 

Keyboard Macro: Click this button, the target server will receive shortcut key.

Send Ctrl+Alt+Del


Bring up the task manager of target server (Windows operating system)

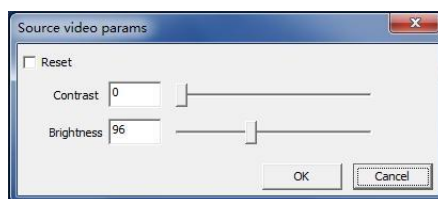
e) Mouse Synchronization 


In double mouse mode, click this button to automatically collate the current mouse, and synchronize the external mouse and internal mouse to the origin of the left corner of the video window.

f) Single mouse 

In the video window, it will hide the remote user's mouse, and only show the target server's mouse.

g) Source video params 



a) Optimum size 

The initial size of the video window is 1024x768, when click this button, the video window will adjust the size of the window according to the resolution of the target server.

b) Full Screen 

The video window enters full screen mode.

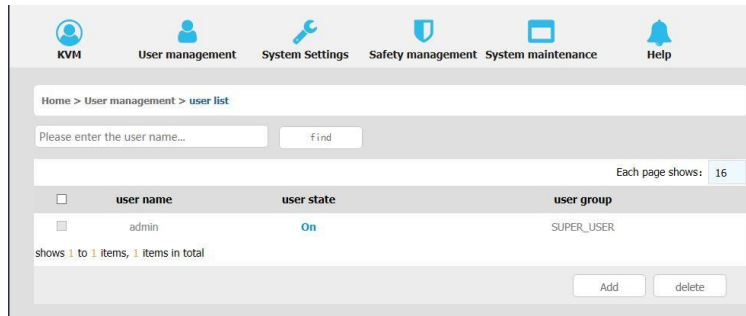
6 IP Menu Option

6.1 User Management

User management mainly set up for adding, deleting and modifying user & user group, user name password modification, user group permissions and so on. If the user does not have user management permission, the user cannot access to user management interface. The user in this section is who have the user management permission.

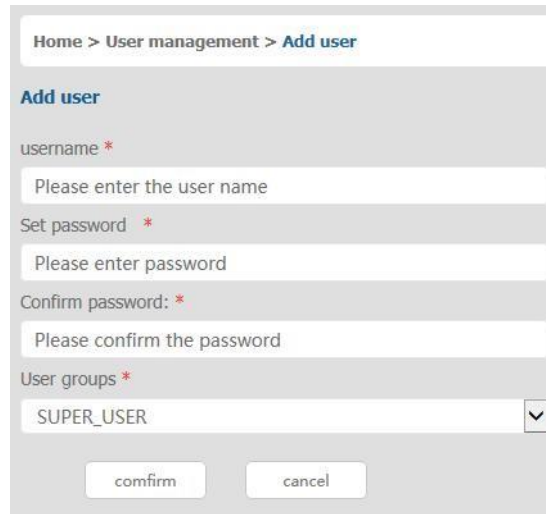


6.1.1 User List



User List Interface: List all registered users, you can see more by page turning

- User name or full user name search
Input user name, it shows related users which make it convenient when you have a large number of users
- Add User
Click **【add】** button, the window below appears:

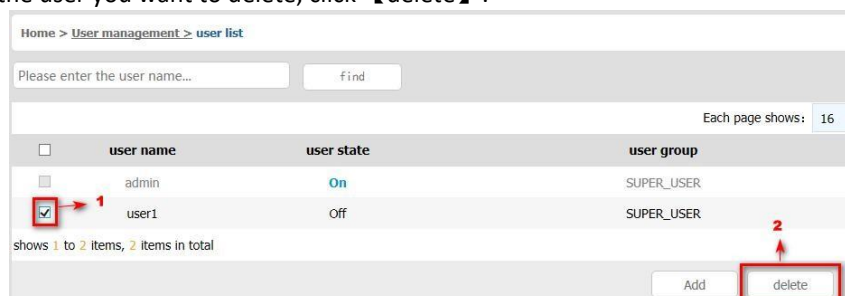


In this window, “*” is required content

- 1) User name: user name contains only low case letter, number and “_”.
- 2) Enter password: without strong password protection, the password can only compose of 1-16 letters, numbers or special characters (-@. \$! _); with strong password protection, the password should be filled in according to the rules of strong password protection. More details please check “ **【security management】** → **【security setting】** → **【strong password】** ”.
- 3) User group: Select the corresponding user group.

6.1.2 Delete User

Select the user you want to delete, click **【delete】** .



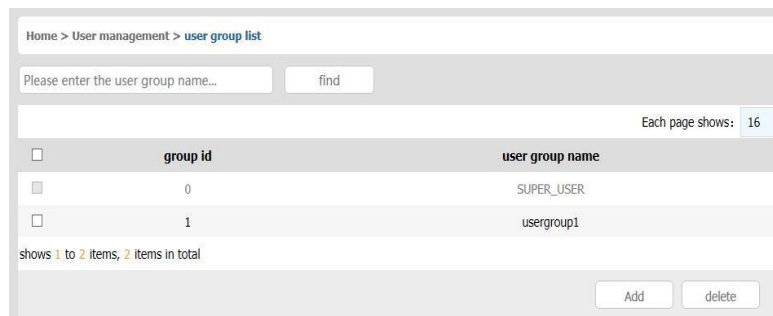
Note: admin cannot be deleted, other users can be deleted, even if they are online

6.1.3 Edit User

Click **[A1]** , edit user window pops up.

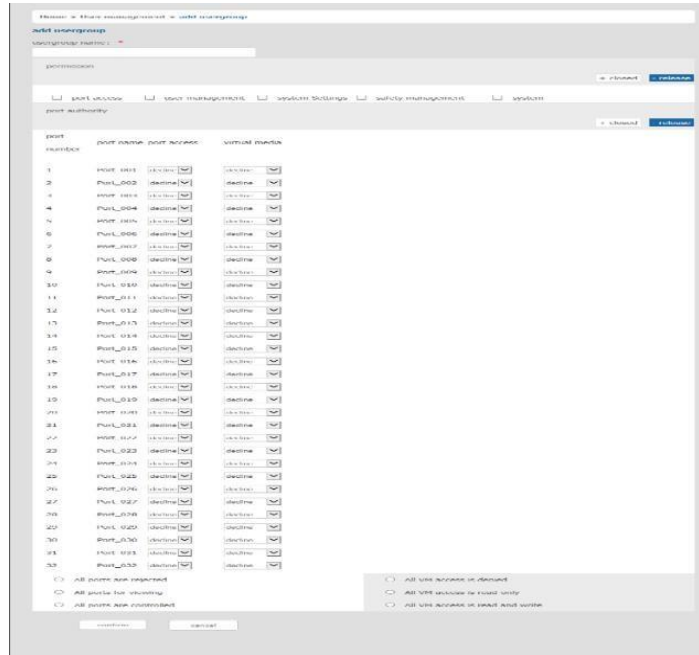


6.1.4 User Group List



User Group List Interface: List all registered users, you can see more by page turning.

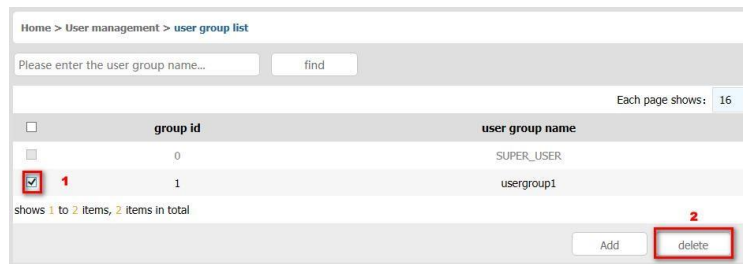
- User group name search
Input user group name, it shows related user groups which make it convenient when you have a large number of users.
- Add user group
Click **[add]** button, the window below appears.



- 1) User group name: it only contains low case letter, number and “_”.
- 2) Authority: Mainly refers to management authority and operation authority, click show more, permission menu appears (shown in picture above), click show less, permission menu disappears.
 - Port Access: Permission to access KVM, and control target server
 - User Management: User management permission
 - Device Setting: KVM device management permission
 - Security Management: Security management permission
 - System Maintenance: System maintenance permission
- 3) Port permission: Set up access and operating authority for each port

6.1.5 Delete user group

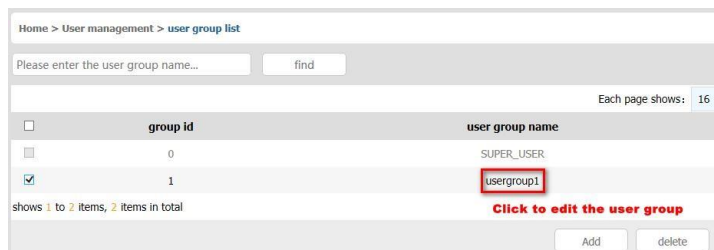
Select the user group you want to delete, click **delete**.



Note: SUPER_USER is system allocated which cannot be deleted.

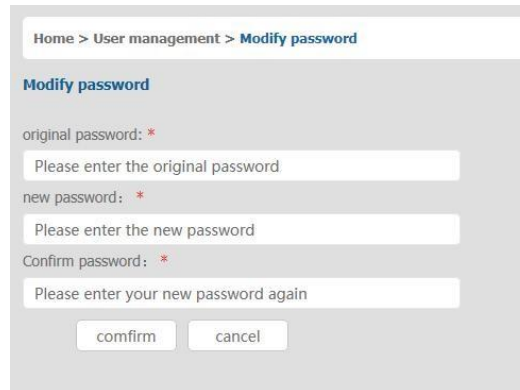
6.1.6 Edit user group

Click **1** edit user group window pop up; For specific operation, please check “add user group”



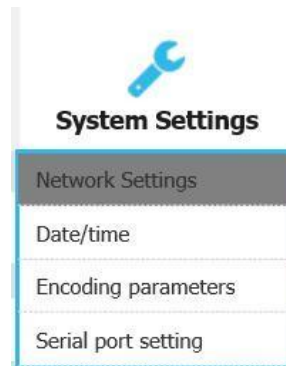
6.1.7 Change Password

The passwords which is using for logged user.

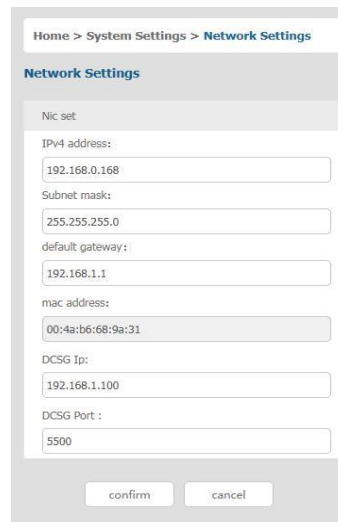


- 1) Old password: Enter the old password.
- 2) New password: Input new password. When strong password protection is not set, the password can only consist of 1-16 letters, numbers or special characters (-@.\$!_); if strong password protection is set, the password must be filled in according to the rules of strong password protection , Please refer to “ 【security management】 —> 【security setting】 —> 【strong password】 ” for details.

6.2 System



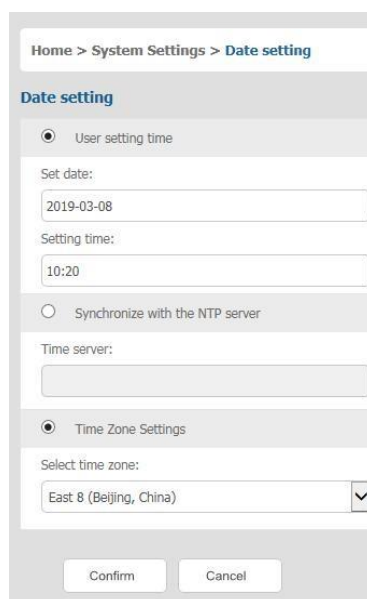
6.2.1 Network Settings



IPV4 address setting:

- IP address: preset IP address
- Subnet mask: Generally, it should be consistent with other devices in the network.
- Default gateway: Generally, it should be consistent with other devices in the network.
- MAC address: physical address
- DCSG IP: the IP address should be the same with the Authentication Server IP address
- DCSG Port: The Port should be the same with the Authentication Server Port.

6.2.2 Date/Time

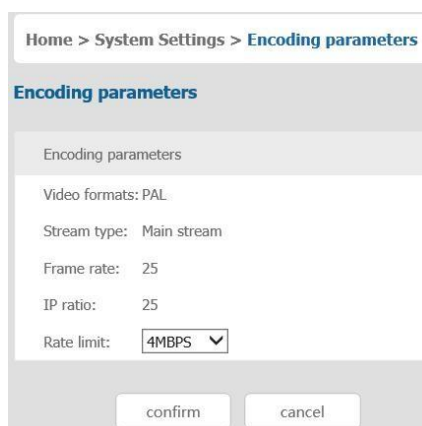


The screenshot shows the 'Date setting' configuration page. The breadcrumb trail is 'Home > System Settings > Date setting'. The page title is 'Date setting'. There are three radio button options: 'User setting time' (selected), 'Synchronize with the NTP server', and 'Time Zone Settings'. Under 'User setting time', there are input fields for 'Set date:' (2019-03-08) and 'Setting time:' (10:20). Under 'Synchronize with the NTP server', there is an empty 'Time server:' input field. Under 'Time Zone Settings', there is a dropdown menu for 'Select time zone:' with 'East 8 (Beijing, China)' selected. At the bottom, there are 'Confirm' and 'Cancel' buttons.

System time setting:

- Customized time: Manual setting
- Synchronize with the NTP server: The system automatically updates the time according to the time server.
- Time zone setting: Choose time zone.

6.2.3 Encoding Parameters

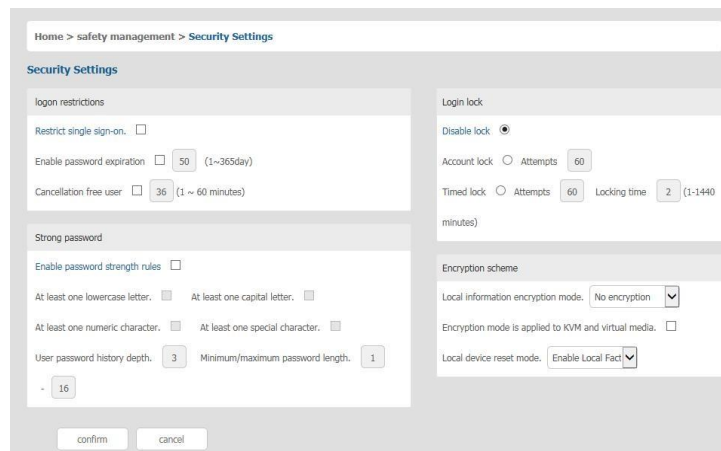


The screenshot shows the 'Encoding parameters' configuration page. The breadcrumb trail is 'Home > System Settings > Encoding parameters'. The page title is 'Encoding parameters'. The configuration includes: 'Encoding parameters' (header), 'Video formats: PAL', 'Stream type: Main stream', 'Frame rate: 25', 'IP ratio: 25', and 'Rate limit: 4MBPS' (dropdown menu). At the bottom, there are 'confirm' and 'cancel' buttons.

6.3 Security Management



6.3.1 Security Settings



- Login restriction: user name login restriction
 - Single sign on restriction: If one user name is logged in, it can no longer log in with this user name, if it is selected, you can log in with the user name.
 - Enable passwords expiration: Current password use days ranges from 1-365 days, if it is selected, the default is 50 days.
 - Free user logs off: If user do not have operations after logging in a set time, the user will be logged off automatically.
- Login lock
 - Disable Lock: When it is selected, login lock will be canceled.
 - Account lock: Set trying number of times for login attempts failed.
 - Timed lock: Set the account lock time when account login failed attempts are over the setting number of times.
- Strong password
 - Enable strong password: When it is selected, the original password will be forced to be changed.
 - Password history depth: New password cannot be the same as the latest 3 default passwords, this number can be changed, it ranges from 1-10.
 - Strong password length: From 1-bit to 16 bits.
- Encryption mode
 - Local information encryption mode: DES AES128 AES256 three encryption schemes and one un-encryption scheme
 - Encryption mode is applied to KVM and virtual media: applied when it is selected

6.3.2 Audit Log

Home > security management > auditlog

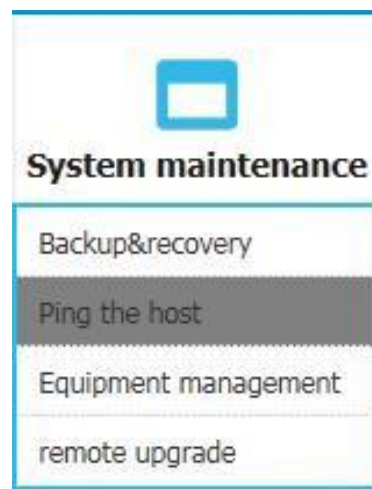
maintype: all subtypes: all date selection: 2019-03-09 00:00:00 to 2019-03-09 10:23:29

search

Each page shows: 16

number	date	maintype	subtype	description
1	2019-03-09 08:00:07	operations	system boot	The user 'admin' 'system boot' on the host IP is '127.0.0.1'
2	2019-03-09 08:00:11	view	get config.	The user 'admin' 'get config.' on the host IP is '192.168.0.168'
3	2019-03-09 08:00:11	view	get config.	The user 'admin' 'get config.' on the host IP is '192.168.0.168'
4	2019-03-09 08:00:11	view	get config.	The user 'admin' 'get config.' on the host IP is '192.168.0.168'
5	2019-03-09 08:00:12	view	get config.	The user 'admin' 'get config.' on the host IP is '192.168.0.168'
6	2019-03-09 08:00:12	view	get config.	The user 'admin' 'get config.' on the host IP is '192.168.0.168'

6.4 System Maintenance



Provide system maintenance tools such as test tools, data backup and restart. Backup& recovery.

Home > system maintenance > backup recovery

backup recovery

backup configuration file

confirm

recovery

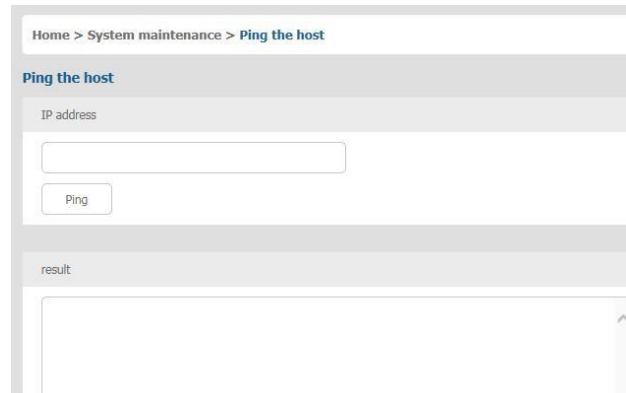
restore backup recovery : recovery

factory reset

factory reset : restore factory Settings may take up to two minutes

- Backup: Backup current system settings
- Restore: Restore the last backup of system
- Factory Reset: Restore to factory state (KVM must be restarted to take effect)

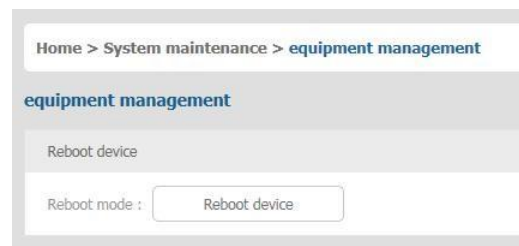
6.4.1 Ping the host



Test network connection status to target server:

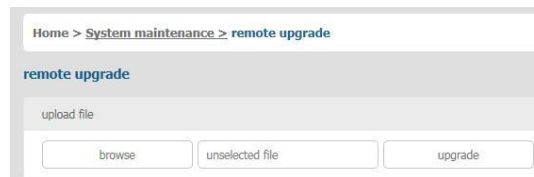
Input IP address and click **【ping】** button, if network is smooth, result returns to “ip is active”; If not, it returns to “no response from IP” (IP is tested target server’s IP).

6.4.2 Equipment Management



6.4.3 Remote upgrade

Provide users with better upgrade experience and continuous technical support.



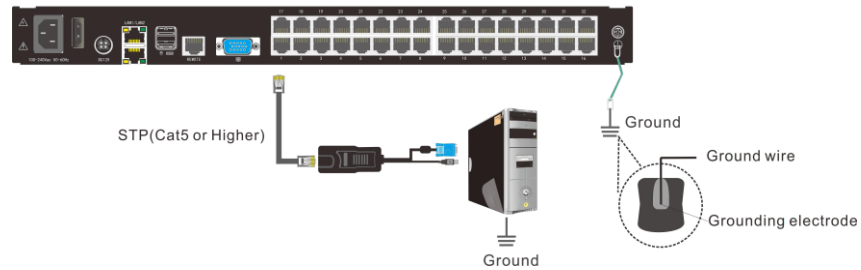
6.4.4 Upgrade method

Click **【browse】** and select upgrade file, upload the file to the device, then click **【upgrade】** to finish upgrade.

7 Appendix

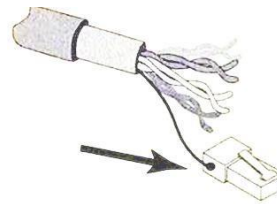
7.1 Grounding Requirements

Make sure the KVM and the devices that connected to KVM are all connected to the ground.

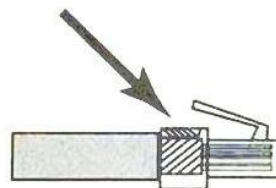


To improve the device safety, please make sure the device is connected to the ground and use the STP cable to connect the device.

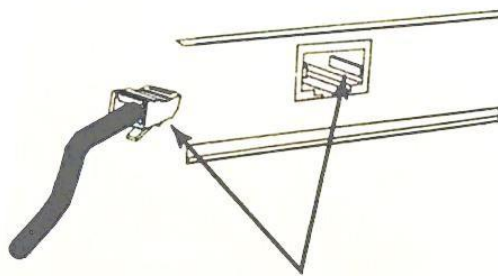
The STP cable contains four shielded twisted pair and one ground wire, the ground wire should be welded into the RJ-45 connector.



Grounding the STP shield cable (as shown below), and make sure the metal RJ45 connector is tight shield.



Connect one end of the RJ-45 connector to the ground RJ-45 connection socket.





Ascent Communication Technology Ltd

AUSTRALIA

140 William Street, Melbourne
Victoria 3000, AUSTRALIA
Phone: +61-3-8691 2902

CHINA

Unit 1933, 600 Luban Road
200023, Shanghai, CHINA
Phone: +86-21-60232616

EUROPE

Pfarrer-Bensheimer-Strasse 7a
55129 Mainz, GERMANY
Phone: +49 (0) 6136 926 3246

Hong Kong SAR

Unit 9, 12th Floor, Wing Tuck Commercial Centre
177 Wing Lok Street, Sheung Wan, Hong Kong SAR
Phone: +852-2851 4722

USA

2710 Thomes Ave
Cheyenne, WY 82001, USA
Phone: + 1 203 350 9822

VIETNAM

11th Floor, Hoa Binh Office Tower
106 Hoang Quoc Viet Street, Nghia Do Ward
Cau Giay District, Hanoi 10649, VIETNAM
Phone: +84-24-37955917

WEB: www.ascentcomtec.com

EMAIL: sales@ascentcomtec.com

Specifications and product availability are subject to change without notice.
Copyright © 2024 Ascent Communication Technology Limited. All rights reserved.
Ver. ACT_KVM1700_User_Manual_V1b_May_2024